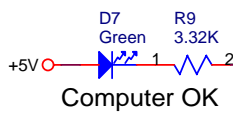
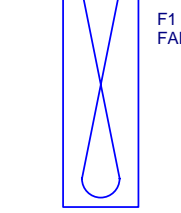
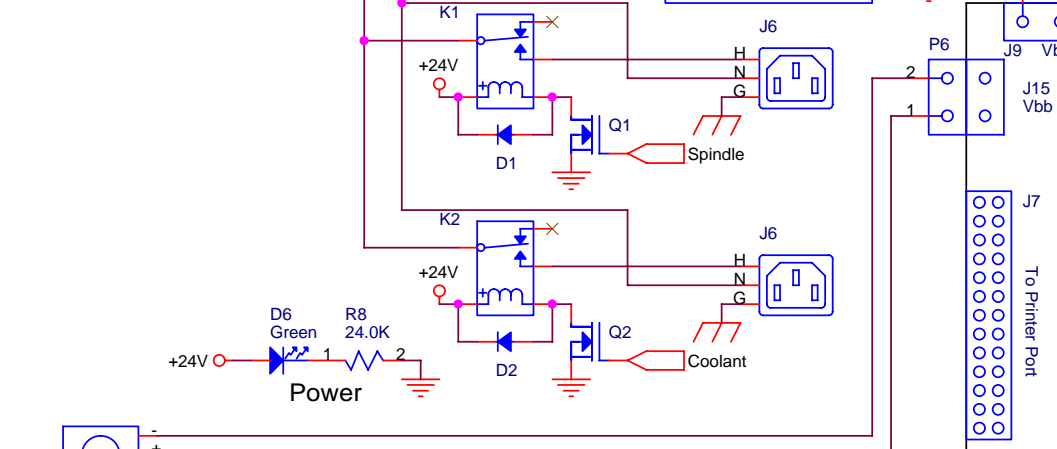
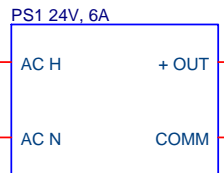
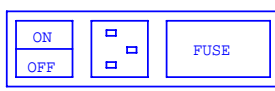
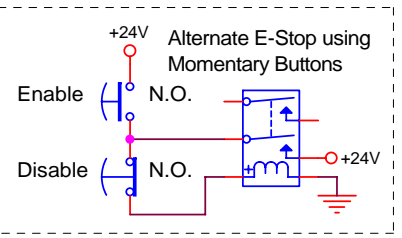


M6 CORCOM AC Input Module

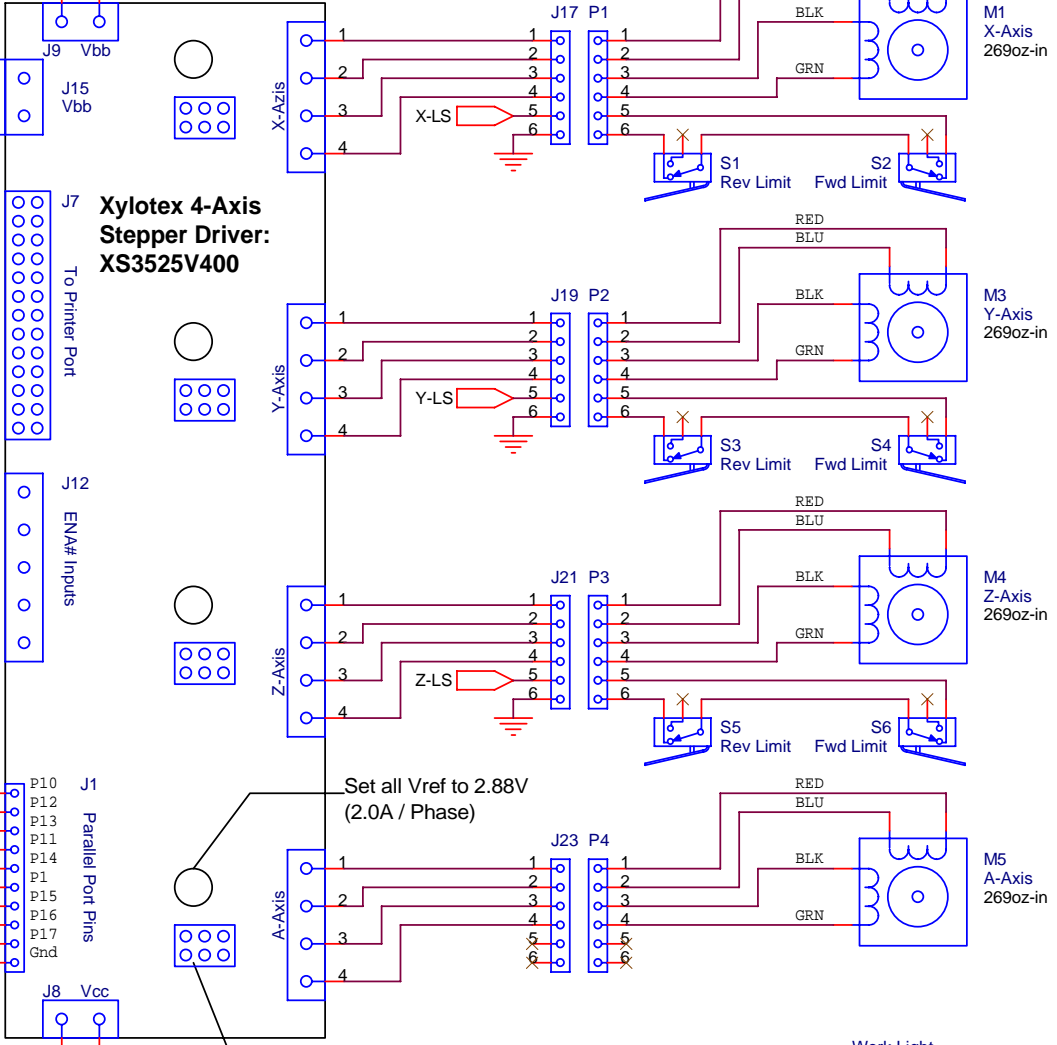


Printer Port Pin Assignments

- *** Outputs ***
- 1 Spindle
- 2 Step X
- 3 Dir X
- 4 Step Y
- 5 Dir Y
- 6 Step Z
- 7 Dir Z
- 8 Step A
- 9 Dir A
- 14 Coolant
- 16 Driver OK Charge Pump
- *** Inputs ***
- 10 X-LS
- 11 Y-LS
- 12 Z-LS
- 13 Input #1
- 15 E-STOP
- *** Ground Pins ***
- 18, 19, 20, 21, 22, 23, 34, 35
- *** Vcc ***
- 26



Xylotex 4-Axis Stepper Driver: XS3525V400



Set all Vref to 2.88V (2.0A / Phase)

Remove all jumpers on X,Y,Z,A Axis to enable E-Stop enable/disable

