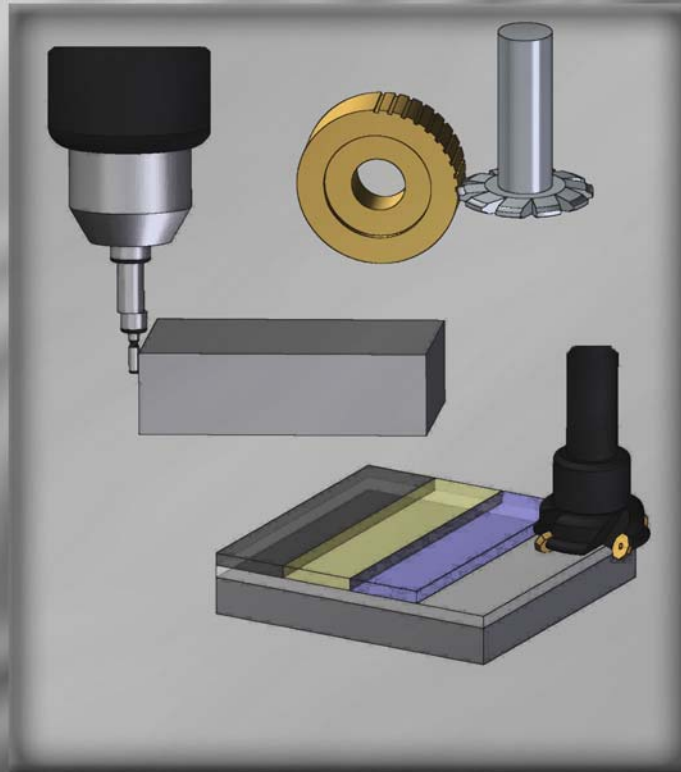


# Mach3 Addons



For Mill



[WWW.NEWFANGLED SOLUTIONS.COM](http://WWW.NEWFANGLED SOLUTIONS.COM)

# User's Manual

Revised 8/26/2005

**Page Intentionally Left Blank**

## Table of Contents

<b>Table of Contents</b> .....	<b>3</b>
<b>Introduction:</b> .....	<b>5</b>
<b>Basic Operational Flow:</b> .....	<b>5</b>
<b>Interface Basics:</b> .....	<b>6</b>
<b>Included Operations:</b> .....	<b>7</b>
Milling Operations.....	7
Cut Arc.....	7
Cut Circle .....	7
Cut Keyway - .....	7
Surface Material .....	7
Thread Milling.....	7
Hole Patterning Operations.....	7
Circular Hole Pattern .....	7
Linear Hole Pattern.....	7
Rectangular Hole Pattern - .....	7
Multiple Hole Pattern – .....	7
Pocketing Operations .....	7
Circular Pocket.....	7
Rectangular Pocket.....	7
4 <sup>th</sup> Axis Operations.....	7
Cut Gear.....	7
Cut Spline.....	7
<b>Material Selection</b> .....	<b>8</b>
<b>Machine Data: Max Spindle Speed</b> .....	<b>8</b>
<b>Current Material Options</b> .....	<b>8</b>
Aluminum .....	8
Steel (Soft).....	8
Steel (Medium) .....	8
Steel (Hard).....	8
Brass.....	8
Bronze (Hard) .....	8
Cast Iron (Soft) .....	8
Cast Iron (Hard) .....	8
<b>Tool Properties</b> .....	<b>9</b>
<b>Navigating through Operations:</b> .....	<b>11</b>

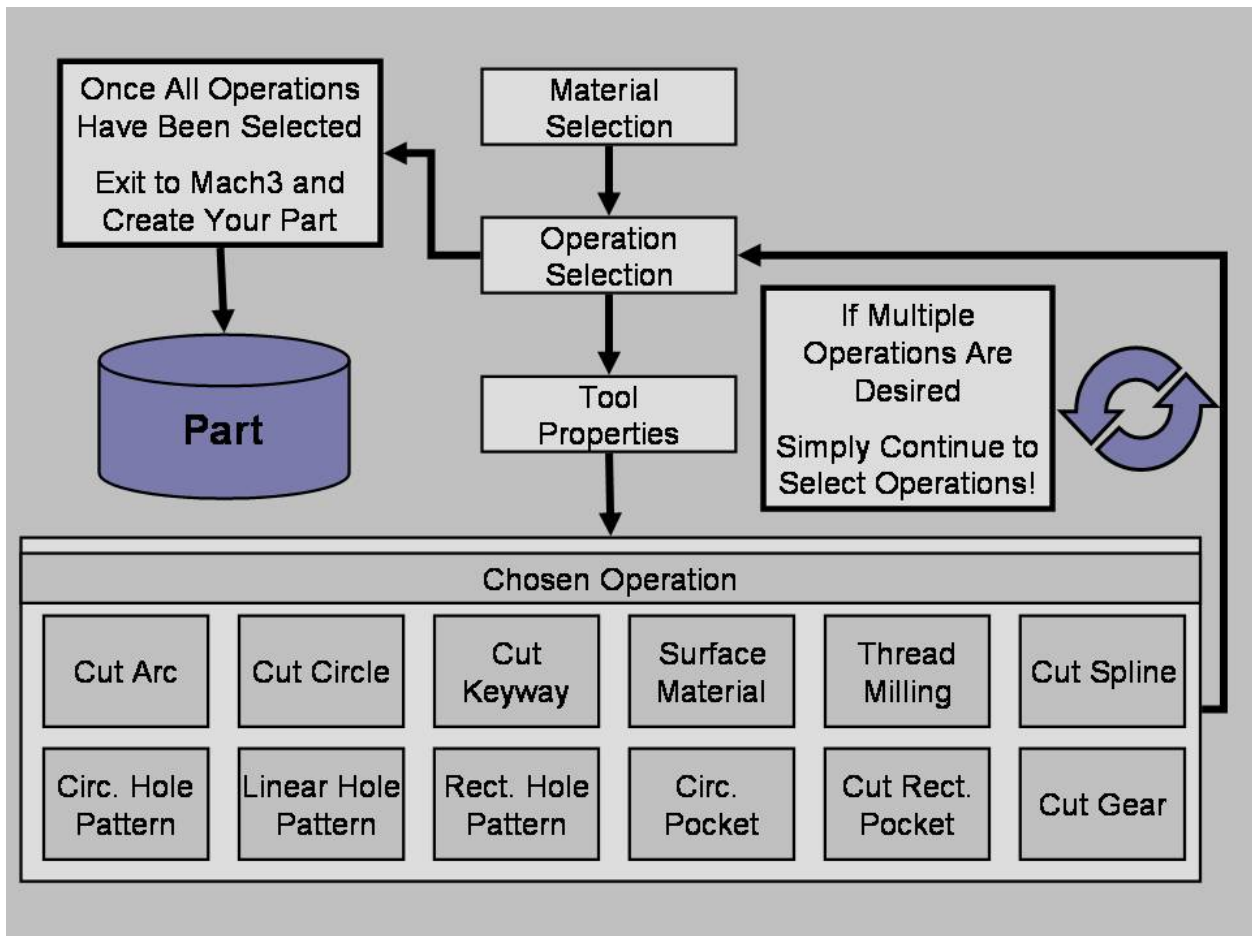
## Appendix 1 - Operations Screen Definitions

<b>Milling Operations</b> .....	12
Cut Arc .....	12
Cut Circle .....	13
Cut Keyway.....	14
Surface Material .....	15
Thread Milling.....	16
<b>Hole Patterning Operations</b> .....	17
Circular Hole Pattern .....	17
Linear Hole Pattern.....	18
Rectangular Hole Pattern .....	19
<b>Multiple Hole Position</b> .....	20
<b>Pocketing Operations</b> .....	21
Circular Pocket.....	21
Rectangular Pocket.....	22
<b>4<sup>th</sup> Axis Operations</b> .....	23
Cut Gear.....	23
Cut Spline.....	24

## Introduction:

This manual has been assembled in an effort to provide the user with some basic information about the layout, functionality, and overall use of the Mach3 Addons from Newfangled Solutions LLC. It is intended to provide the beginning user with some very basic information that will hopefully help decrease the time necessary to go from “Start to Part”. The format this manual follows is simple - we begin with some very basic user interface items, we give some information about each of the wizard operations included, and we give some basic suggestions for material settings. Each wizard operation then has its own chapter where all terms used in that operation are defined.

## Basic Operational Flow:



Throughout Mach3 Addons for Mill, the user will be required to enter information. It is this information that will be used for all of the built in functions of the software. Through the course of conducting a selected operation, the user will progress from the initial Material Selection Screen, to the Operation Selection Screen, to the Tool Properties Screen, to the Operation Specific Screen, where the user can **Post Code**. At this point the user will have completed an operation, and could exit to Mach3 to run that operation. However, the user can also continue to select operations allowing the production of more complex parts from a single G-code File. Each operation is clearly differentiated in the created G-code, making this an effective teaching tool, or just easier to modify.

## Interface Basics:

Essential values used throughout the Mach3 Addons package are displayed to the user as a Digital Read Out (DRO - See Figure 1 below). At different points, the user will need to provide information necessary for an operation to be completed. When entering such values in this screenset, you must select the DRO you wish to use by positioning the mouse over it and pressing the left mouse button (Left Clicking). You will notice the DRO color change upon selection. After entering the desired value, the user must then press the Enter key.

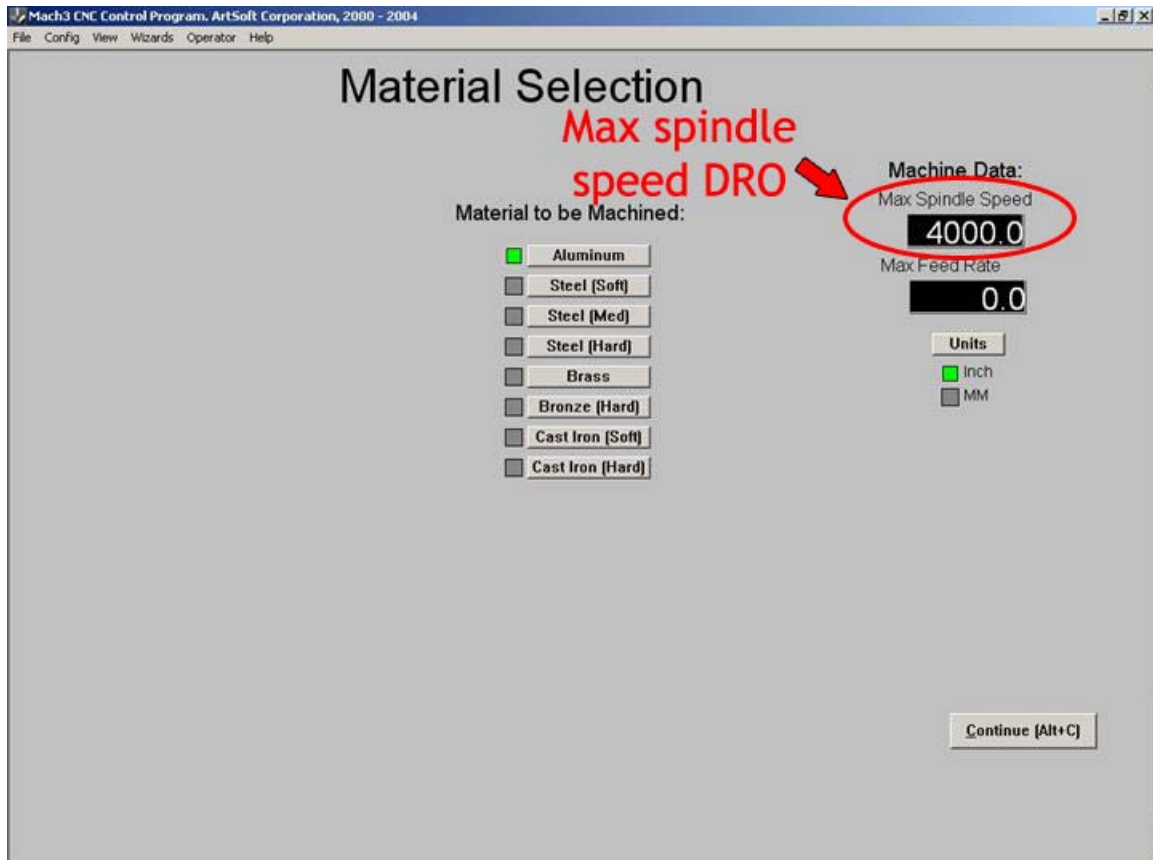
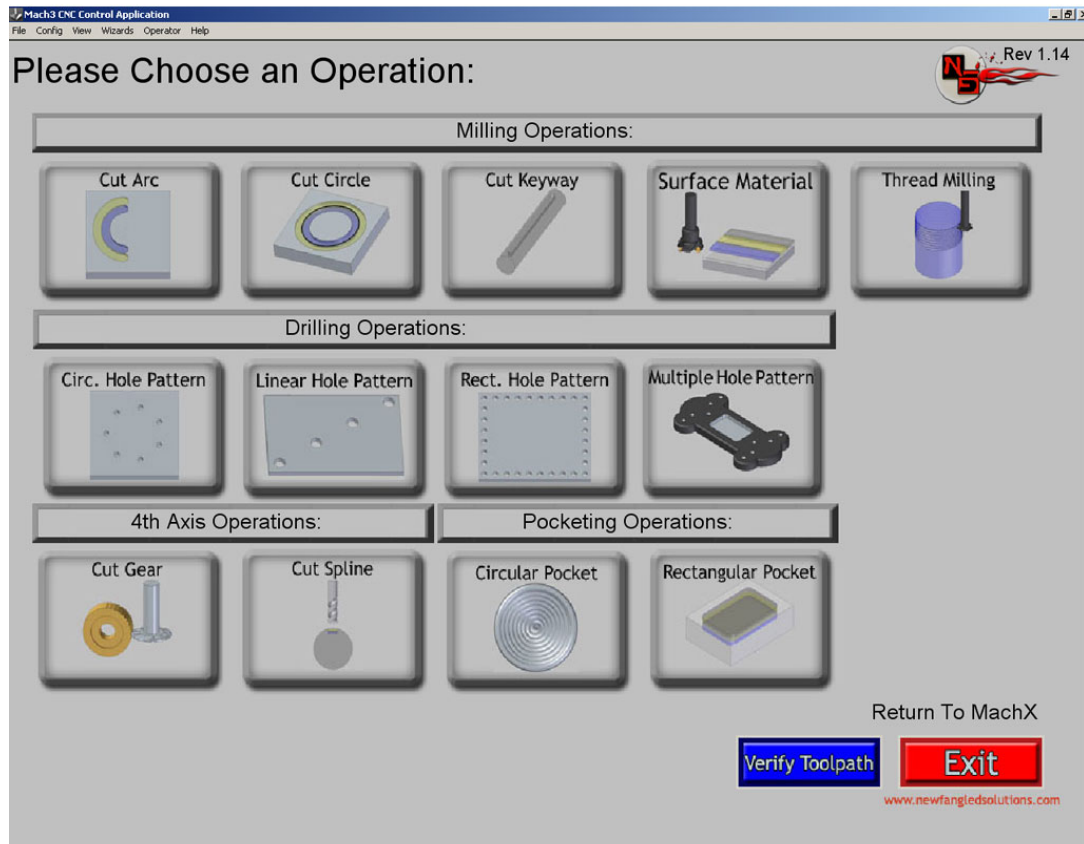


Figure 1: Digital Read Out Example

If your process requires a finish pass, we recommend leaving yourself some room. Create pockets, holes or inside cuts **slightly undersize**, make your surfacing or outside cuts **slightly oversize** and then simply run the wizard a second time, changing the required settings to your desired finish values. Since your settings should be saved, it's quite simple!

## Included Operations:



### Milling Operations

**Cut Arc** – Commonly used for fillets, or milling curves

**Cut Circle** – Commonly used for cutting circles, or circular grooves for oil rings etc.

**Cut Keyway** – Commonly used to mill Keyways in round stock

**Surface Material** – Commonly used to initially face material before milling

**Thread Milling** – Commonly used to create internal or external threads on various parts

### Hole Patterning Operations

**Circular Hole Pattern** – Commonly used to position holes along a circular pattern

**Linear Hole Pattern** – Commonly used to position holes in a linear pattern

**Rectangular Hole Pattern** – Commonly used to position holes along a rectangular pattern

**Multiple Hole Pattern** – Commonly used to “drill” in up to 20 predetermined locations

### Pocketing Operations

**Circular Pocket** – Commonly used to create a circular recessed pocket

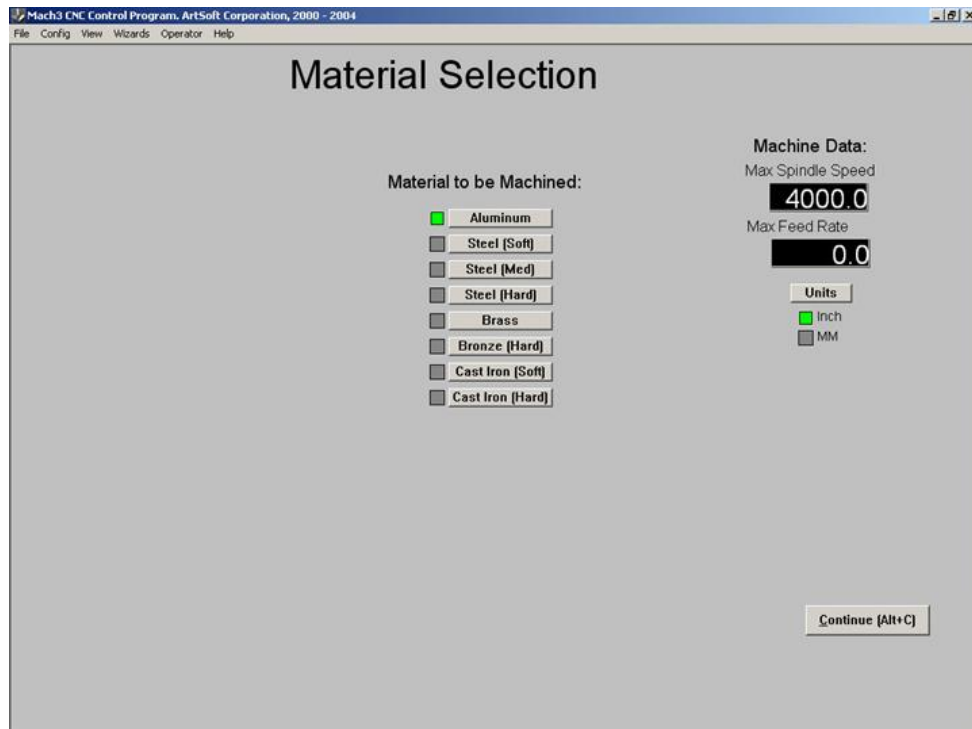
**Rectangular Pocket** – Commonly used to create a rectangular recessed pocket with corner radius of the tool diameter

### 4<sup>th</sup> Axis Operations

**Cut Gear** – Commonly used to cut gears using a gear cutting tool

**Cut Spline** – Commonly used to create a spline using a spline cutting tool

## Material Selection



### Machine Data: Max Spindle Speed

Maximum Spindle RPM for the Mill (One Time Entry for Most Users)

### Machine Data: Max Feed Rate

Maximum Feed Rate for the Mill (One Time Entry for Most Users)

### Current Material Options

#### ***Aluminum***

Appropriate for general milling, also appropriate for soft metals, wood, and some plastics such as PTFE, PVC, and UHMW

#### ***Steel (Soft)***

Appropriate for Common Steels such as Hot and Cold Rolled 1018

#### ***Steel (Medium)***

Appropriate for Harder Steels such as 4140, O1, D2, or other Tool Steels

#### ***Steel (Hard)***

Appropriate for Hardened Tool Steels, and Stainless Steels

#### ***Brass***

Appropriate for Brass, medium metals, and many plastics susceptible to melting during cutting such as Polypropylene, Polyethylene, and Acrylic

#### ***Bronze (Hard)***

Appropriate for Bronze and Coppers

#### ***Cast Iron (Soft)***

#### ***Cast Iron (Hard)***



## Tool Properties

Mach3 CNC Control Program, ArtSoft Corporation, 2000 - 2004

File Config View Wizards Operator Help

Rev 1.10

### Please Choose Tool Properties:

**Tool Data:**  
 Tool #: 4  
 Tool Dia.: 0.2500

**Surface Speed for Special Tool:** 0.00  
 Special SS Units:  
 Meters/Min  
 Ft./Min

**Material:**  
 HSS  
 HSS (TiN)  
 Carbide  
 Carbide (TiN)

**Number of Cutting Tips:** 4  
**Chip load per tooth:** 0.0009  
**Tool Units:**  
 Millimeters  
 Inches

**Spindle Direction:**  
 CW (M3)  
 CCW (M4)  
 Flood  
 Mist

**Overrides:**  
 Spindle %: 100  
 Feed %: 100  
**Percent Plunge Feed Rate:** 50

**Speed and Feed:**  
 Spindle RPM: 4000.0  
 Feed Rate: 14.4

Calculate Speed and Feed

Cancel Continue (Alt+C)

www.newfangledsolutions.com

### Calculate Speed and Feed

Select this button to calculate the Speed and Feed values based on user entered information.

### Carbide

Carbide Tipped Tooling

### Carbide (TiN)

Titanium Nitride Coated Carbide Tooling

### Chip Load per Tooth

Desired chip load per cutting tip (Generally accepted as the depth of cut desired for each tip of the cutting tool)

### Flood

User selected Flood coolant option

### HSS

High Speed Steel

### HSS (TiN)

Titanium Nitride Coated High Speed Steel

### Mist

User selected Mist coolant option

### Number of Cutting Tips

Number of cutting tips on tool to be used for the selected operation

**Overrides: Feed %**

Feed Rate override allowing user to customize output values to their specific equipment. Entered value of 100% or less will decrease Feed Rate to the entered percentage of the otherwise calculated value. (Calculated Feed \* override% = new Feed Therefore entering 80% will change a calculated Feed Rate of 14.4 in/min to a value of 11.5 in/Min )

**Overrides: Spindle %**

Spindle speed override allowing user to customize output values to their specific equipment. Entered value of 100% or less will decrease spindle RPM to the entered percentage of the otherwise calculated value. (Calculated RPM \* override% = new RPM Therefore entering 80% will change a calculated spindle RPM of 4000 to a value of 3200)

**Percent Plunge Feed Rate**

Plunge Feed Rate override allowing user to customize output values to their specific needs. Entered value of 100% or less will decrease Plunge Feed Rate to the entered percentage of Feed Rate value. (Calculated Feed Rate \* override% = new Plunge Feed Rate) Therefore entering 50% will change the Plunge Feed Rate from the Calculated Feed Rate of 14.4 in./min. to a value of 7.2 in./min.)

**Special SS Units: Ft./Min.**

User selected Units for specialized tooling

**Special SS Units: Meters/Min.**

User selected Units for specialized tooling

**Speed and Feed: Feed Rate**

Calculated Feed Rate determined by user entered values

**Speed and Feed: Spindle RPM**

Calculated Spindle RPM (Revolutions per Minute) determined by user entered values

**Spindle Direction: CCW (M4)**

Spindle turns in a clockwise direction

**Spindle Direction: CW (M3)**

Spindle turns in a clockwise direction

**Surface Speed for Special Tool**

User entered speed override enabling the use of specific tool speeds necessary for specialized tooling

**Tool #**

User assigned tool number

**Tool Diameter**

Diameter of tool to be used for the selected operation

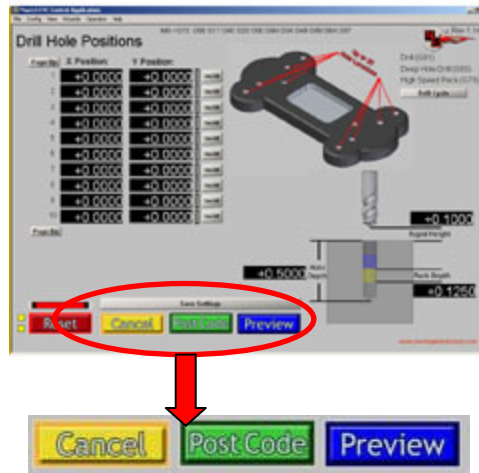
**Tool Units: Inches**

User selected Units for general tooling

**Tool Units: Millimeters**

User selected Units for general tooling

## Navigating through Operations:



### Cancel

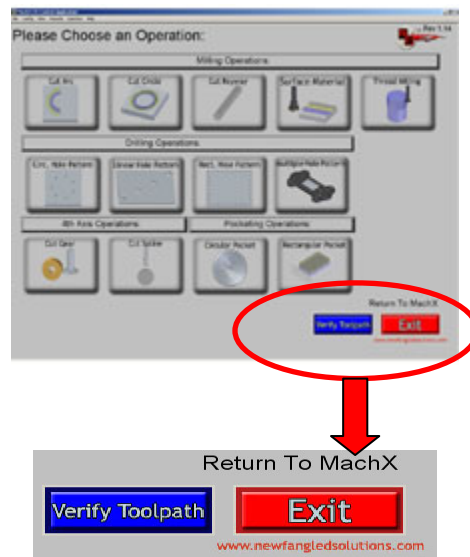
Returns user to Select Operation screen

### Post Code

Appends G code from selected operation to Parent G code file

### Preview

Gives user a view of the toolpath generated from the G code created by the selected operation



### Verify Toolpath

Gives User a view of the toolpath(s) created by the G code contained in the parent G code file.

### Exit

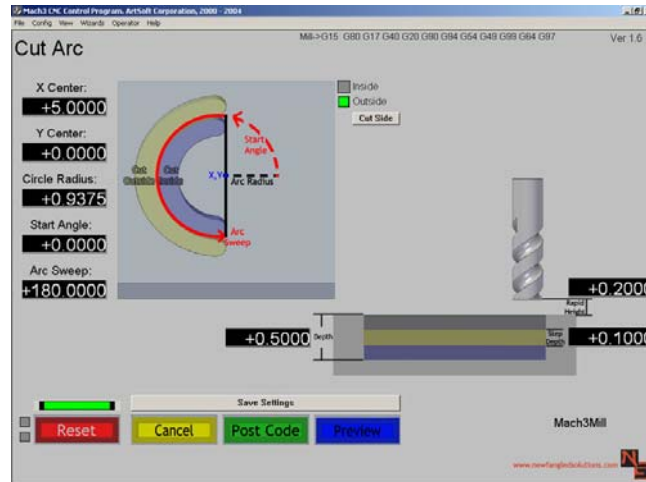
Returns user to the Run Program screen of Mach3 and loads the parent G code file.

## Appendix 1 - Operations Screen Definitions

---

### Milling Operations

#### *Cut Arc*



#### **Arc Radius**

The radius of the arc to be cut.

#### **Arc Sweep**

A value in Degrees, which represents how much of an arc is desired.

#### **Cut Side (Inside)**

This selection causes the tool to cut on the inside of the user specified Arc. This makes the outside radius of the cutout the user specified value.

#### **Cut Side (Outside)**

This selection causes the tool to cut on the outside of the user specified Arc. This makes the inside radius of the cutout the user specified value.

#### **Rapid Height**

Distance between the horizontal surface of the part and the tip of the tool.

#### **Start Angle**

The angle created between the defined X axis and the line intersecting the user specified circle where the first hole will be placed.

#### **Step Depth**

Depth of material removed per tool pass.

#### **Total Depth**

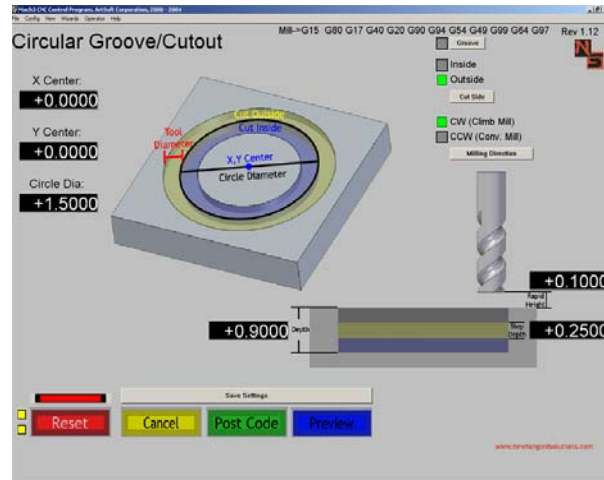
Final depth of cut. (Total amount of material removed after completing all steps or pecks.)

#### **X Center**

X value of the Center point (X,Y) of the Arc to be cut.

#### **Y Center**

Y value of the Center point (X,Y) of the Arc to be cut.

**Cut Circle****% Stepover**

A percentage of the tool diameter representing the amount of overlap between subsequent tool passes.

**CCW Milling Direction (Conventional Mill)**

Counter clockwise tool rotation utilized in conventional milling.

**Circle Diameter**

Diameter of the Circle desired. This circle should represent the finished diameter desired, and the appropriate Cut Inside or Cut Outside selection should be made to create the desired result.

**Cut Side (Inside)**

This selection causes the tool to cut on the inside of the user specified circle. This makes the outside diameter of the cutout the user specified value.

**Cut Side (Outside)**

This selection causes the tool to cut on the outside of the user specified circle. This makes the inside diameter of the cutout the user specified value.

**CW Milling Direction (Climb Mill)**

Clockwise tool rotation utilized in climb milling.

**Groove**

This selection will make the initial plunge occur in line with the desired groove, resulting in a clean circular groove.

**Rapid Height**

Distance between the horizontal surface of the part and the tip of the tool.

**Step Depth**

Depth of material removed per tool pass.

**Tool Diameter**

User specified Tool Diameter (will represent the width of material removed by this operation).

**Total Depth**

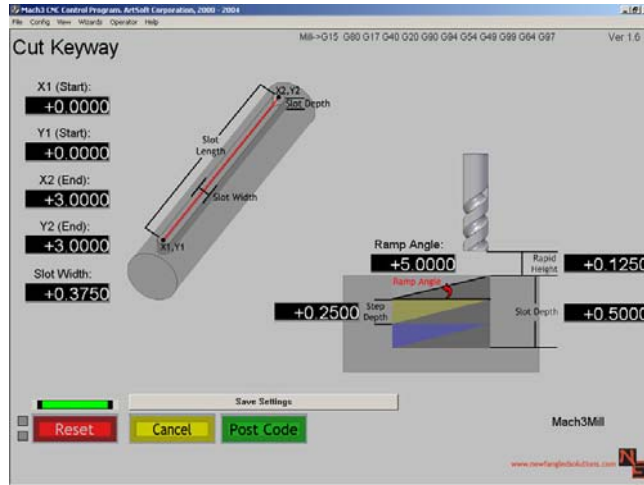
Final depth of cut. (Total amount of material removed after completing all steps or pecks.)

**X Center**

X value of the Center point (X,Y) of the circle to be cut.

**Y Center**

Y value of the Center point (X,Y) of the circle to be cut.

**Cut Keyway****Ramp Angle**

Angle from horizontal which the tool will initially follow at the start of each Step.

**Rapid Height**

Distance between the horizontal surface of the part and the tip of the tool.

**Slot Depth**

Distance from material surface to bottom of cut. Represents the amount of material removed.

**Slot Width**

Width of the material removed.

**Step Depth**

Depth of material removed per tool pass.

**X1 (Start)**

Position along the X-axis of the start of the slot.

**X2 (End)**

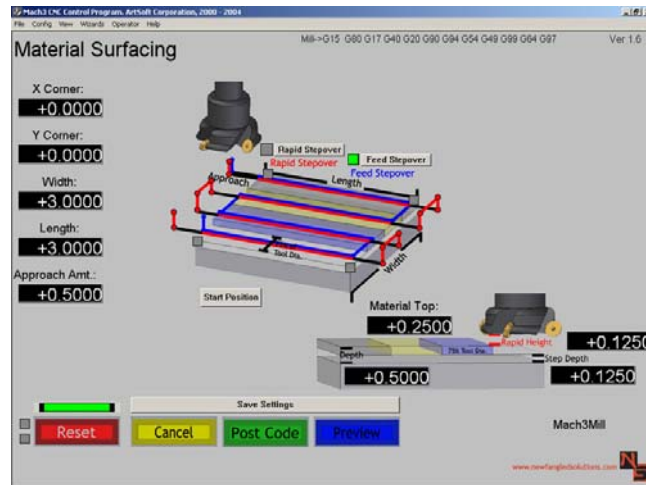
Position along the X-axis of the end of the slot.

**Y1 (Start)**

Position along the Y-axis of the start of the slot.

**Y2 (End)**

Position along the Y-axis of the end of the slot.

**Surface Material****Approach Amount**

The horizontal distance between the leading edge of the tool and the part surface at the start of the initial surface pass. This value will also be used as the distance the tool will travel after completing a surface pass prior to the rapid move when utilizing the Rapid Steptover option.

**Depth**

Distance from material surface to bottom of cut. Represents the amount of material removed.

**Feed Steptover**

Surfacing method where the tool remains in contact with the part surface until each Step has been completed.

**Length**

The measurement of the extent of something along its greatest dimension.

**Material Surface**

Location of the material surface.

**Rapid Height**

Distance between the horizontal surface of the part and the tip of the tool.

**Rapid Steptover**

Surfacing method where the tool continues for the specified Approach Distance beyond the part prior to making rapid moves which set up the next steptover pass.

**Step Depth**

Depth of material removed per tool pass.

**Width**

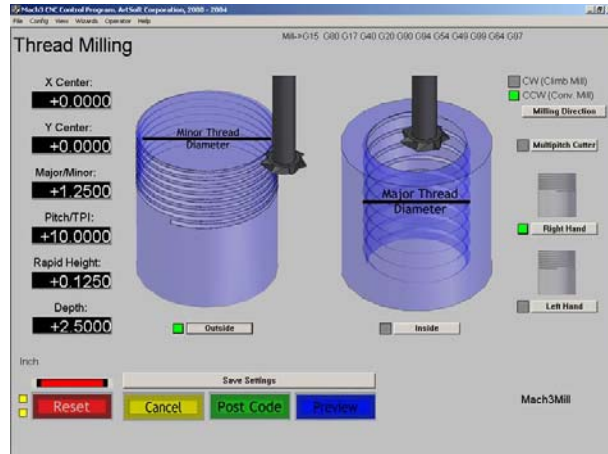
The measurement of the extent of something along its minor dimension.

**X Corner**

Location of the X-axis Zero corner.

**Y Corner**

Location of the Y-axis Zero corner.

**Thread Milling****CCW Milling Direction (Conventional Mill)**

Counter clockwise tool rotation utilized in conventional milling.

**CW Milling Direction (Climb Mill)**

Clockwise tool rotation utilized in climb milling.

**Depth**

Distance from material surface to bottom of cut. Represents the amount of material removed.

**Inside Thread**

Selection enabling internal threading.

**Left Hand Thread**

Selection enabling the creation of left handed threads. Thread is cut in a clockwise direction.

**Major Thread Diameter**

Diameter of the inside thread.

**Minor Thread Diameter**

Diameter of the outside thread.

**Multipitch Cutter**

Selection allowing the use of multipitch cutters for threading.

**Outside Thread**

Selection that allows the creation of Outside threads.

**Pitch/TPI**

The thread pitch is the distance between threads expressed in millimeters (measured along the length of the part). TPI is simply a count of the number of threads per inch measured along the length of the part.

**Rapid Height**

Distance between the horizontal surface of the part and the tip of the tool.

**Right Hand Thread**

Selection enabling the creation of right handed threads. Thread is cut in a counter clockwise direction.

**X Center**

X value of the Center point (X,Y) of the thread to be cut.

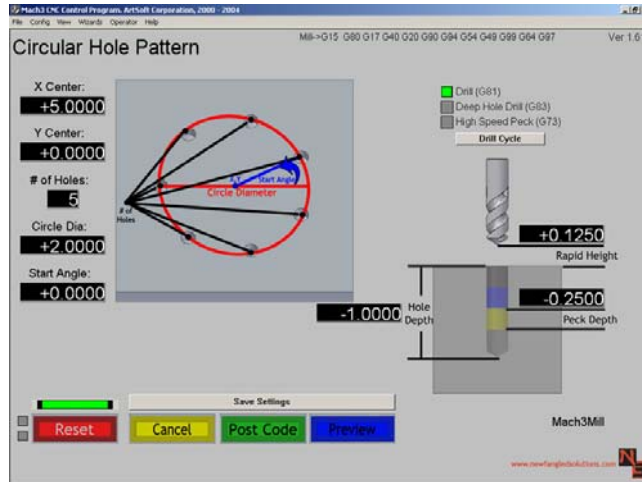
**Y Center**

Y value of the Center point (X,Y) of the thread to be cut.



## Hole Patterning Operations

### *Circular Hole Pattern*



#### # of Holes

Number of Holes you wish to include in the circular pattern.

#### Circle Diameter

Diameter of the circle the holes will be placed along. This circle should represent a circle which passes through the center of the holes desired.

#### Drill Cycle - Deep Hole Drill (G83)

Drill cycle with full retract clearing steps to remove chip buildup inside the hole being drilled.

#### Drill Cycle - Drill (G81)

Drill cycle without clearing steps. Commonly used for shallow holes where chip buildup is a minimal issue, or for spot drilling holes.

#### Drill Cycle - High Speed Peck (G73)

Drill Cycle with numerous clearing steps. Will only break chips, will **Not** do a full retract.

#### Hole Depth

Distance from material surface to bottom of cut. Represents the amount of material removed.

#### Peck Depth

Depth tool will travel before breaking or clearing chips.

#### Rapid Height

Distance between the horizontal surface of the part and the tip of the tool.

#### Start Angle

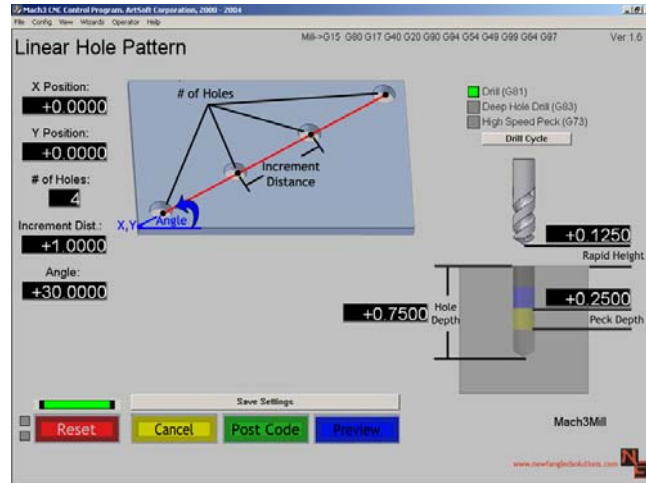
The angle created between the defined X axis and the line intersecting the start of the user specified Arc.

#### X Center

X value of the Center point (X,Y) of the pattern to be cut.

#### Y Center

Y value of the Center point (X,Y) of the pattern to be cut.

**Linear Hole Pattern****# of Holes**

Number of holes you wish to include in the linear pattern.

**Angle**

The angle created between the defined X axis and the desired line the hole(s) will be placed along.

**Depth**

Distance from material surface to bottom of cut. Represents the amount of material removed.

**Drill Cycle - Deep Hole Drill (G83)**

Drill cycle with clearing steps to remove chip buildup inside the hole being drilled.

**Drill Cycle - Drill (G81)**

Drill cycle without clearing steps. Commonly used for shallow holes where chip buildup is a minimal issue.

**Drill Cycle - High Speed Peck (G73)**

Drill Cycle with numerous clearing steps. Will only break chips, will **Not** do a full retract.

**Increment Distance**

Linear distance between desired hole centers.

**Peck Depth**

Depth of tool travel before clearing created chips.

**Rapid Height**

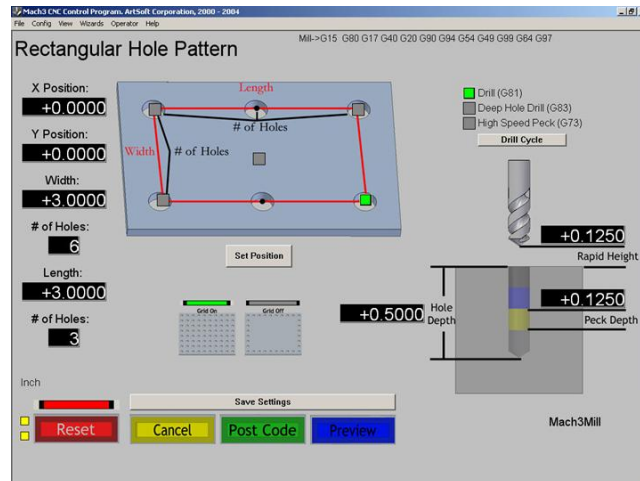
Distance between the horizontal surface of the part and the tip of the tool.

**X Position**

Location of Starting point along the X-axis.

**Y Position**

Location of Starting point along the Y-axis.

***Rectangular Hole Pattern*****# of Holes (L)**

Number of Holes you wish the make along the length of the part.

**# of Holes (W)**

Number of Holes you wish the make along the width of the part.

**Drill Cycle - Deep Hole Drill (G83)**

Drill cycle with clearing steps to remove chip buildup inside the hole being drilled.

**Drill Cycle - Drill (G81)**

Drill cycle without clearing steps. Commonly used for shallow holes where chip buildup is a minimal issue.

**Drill Cycle - High Speed Peck (G73)**

Drill Cycle with numerous clearing steps. Will only break chips, will **Not** do a full retract.

**Grid Off**

Selection that results in a rectangular pattern of holes around the perimeter of the rectangle.

**Grid On**

Selection that results in a rectangular matrix of holes throughout the entire rectangle.

**Hole Depth**

Distance from material surface to bottom of cut. Represents the amount of material removed.

**Length**

The measurement of the extent of something along its greatest dimension.

**Peck Depth**

Depth of tool travel before clearing created chips.

**Rapid Height**

Distance between the horizontal surface of the part and the tip of the tool.

**Width**

The measurement of the extent of something along its minor dimension.

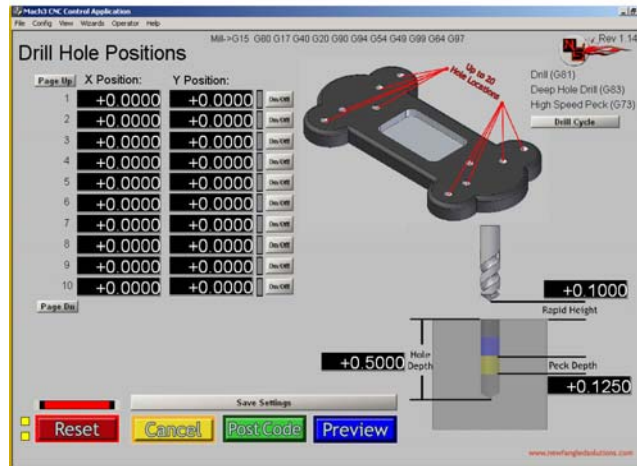
**X Position**

Location of Set Position point along the X-axis.

**Y Position**

Location of Set Position point along the Y-axis.

## Multiple Hole Position



### Drill Cycle - Deep Hole Drill (G83)

Drill cycle with clearing steps to remove chip buildup inside the hole being drilled.

### Drill Cycle - Drill (G81)

Drill cycle without clearing steps. Commonly used for shallow holes where chip buildup is a minimal issue.

### Drill Cycle - High Speed Peck (G73)

Drill Cycle with numerous clearing steps. Will only break chips, will **Not** do a full retract.

### Hole Depth

Distance from material surface to bottom of cut. Represents the amount of material removed.

### Page Down

Allows user to enter values for hole locations 11-20

### Page Up

Allows User to enter values for hole locations 1-10

### Peck Depth

Depth of tool travel before clearing created chips.

### Rapid Height

Distance between the horizontal surface of the part and the tip of the tool.

### X Position

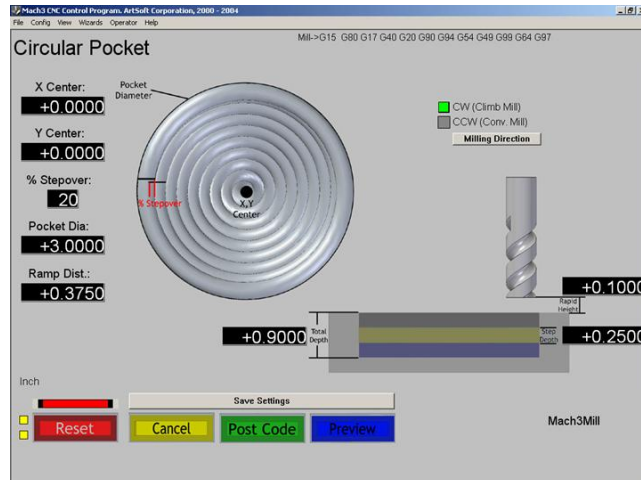
Location of Hole Position along the X-axis (Up to 20 locations possible per repetition)

### Y Position

Location of Hole Position along the Y-axis. (Up to 20 locations possible per repetition)

## Pocketing Operations

### *Circular Pocket*



#### **CCW Milling Direction (Conventional Mill)**

Counter clockwise tool rotation utilized in conventional milling.

#### **CW Milling Direction (Climb Mill)**

Clockwise tool rotation utilized in climb milling.

#### **Pocket Diameter**

Outside diameter of the circle created.

#### **Ramp Distance**

This is the distance to ramp out of the cut. It is like a pull off for each pass.

#### **Rapid Height**

Distance between the horizontal surface of the part and the tip of the tool.

#### **Step Depth**

Depth of material removed per tool pass.

#### **Total Depth**

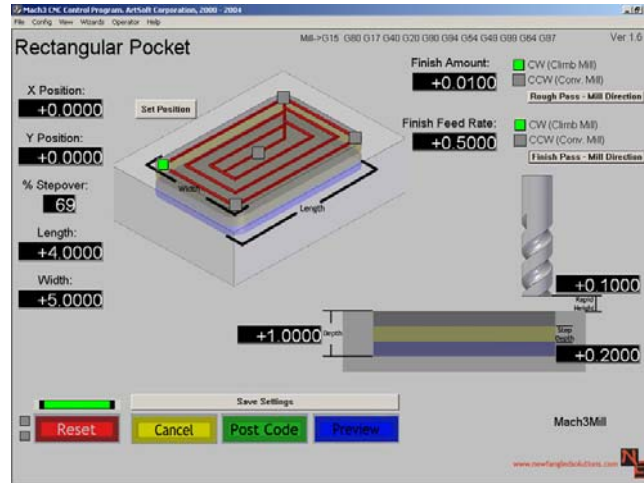
Final depth of cut. (Total amount of material removed after completing all steps or pecks.)

#### **X Center**

X value of the Center point (X,Y) of the circular pocket to be cut.

#### **Y Center**

Y value of the Center point (X,Y) of the circular pocket to be cut.

**Rectangular Pocket****% Steper**

A percentage of the tool diameter representing the amount of overlap between subsequent tool passes.

**Length**

The measurement of the extent of something along its greatest dimension.

**Rapid Height**

Distance between the horizontal surface of the part and the tip of the tool.

**Step Depth**

Depth of material removed per tool pass.

**Depth**

Distance from material surface to bottom of cut. Represents the amount of material removed.

**Width**

The measurement of the extent of something along its minor dimension.

**X Position**

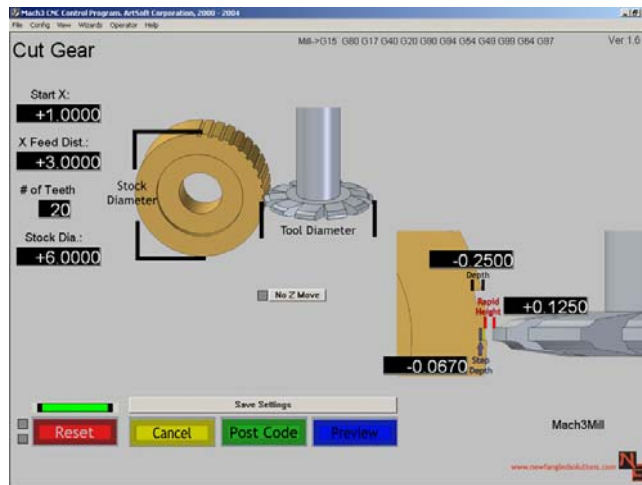
Location of Set Position point along the X-axis.

**Y Position**

Location of Set Position point along the Y-axis.

## 4<sup>th</sup> Axis Operations

### *Cut Gear*



#### **# of Teeth**

Number of teeth the finished part must contain.

#### **Depth**

Distance from material surface to bottom of cut. Represents the amount of material removed.

#### **No Z Move**

Disable upward tool travel.

#### **Rapid Height**

Distance between the horizontal surface of the part and the tip of the tool.

#### **Starting X**

Location along the X-Axis where cut should begin.

#### **Step Depth**

Depth of material removed per tool pass.

#### **Stock Diameter**

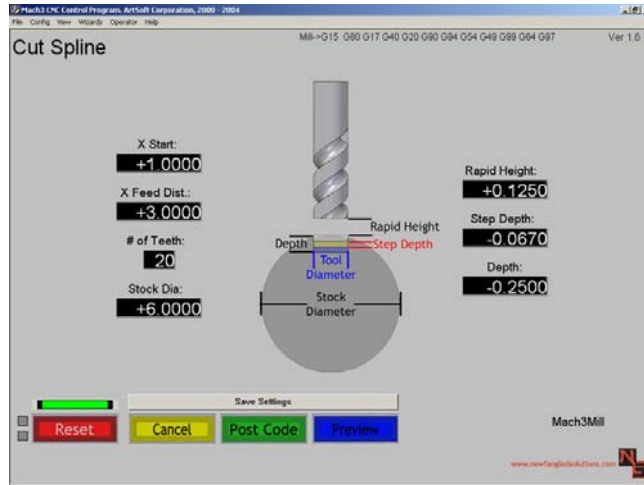
Diameter of initial stock.

#### **Tool Diameter**

Previously specified Tool Diameter.

#### **X Feed Distance**

Length of cut.

***Cut Spline*****# of Teeth**

Number of teeth the finished part must contain.

**Depth**

Distance from material surface to bottom of cut. Represents the amount of material removed.

**Rapid Height**

Distance between the horizontal surface of the part and the tip of the tool.

**Starting X**

Location along the X-Axis where cut should begin.

**Step Depth**

Depth of material removed per tool pass.

**Stock Diameter**

Diameter of initial stock.

**Tool Diameter**

Previously specified Tool Diameter (will represent the width of material removed by this operation)

**X Feed Distance**

Length of cut.