



How to Hints for Mach3Screen mods



This is done in Paint (Start, programs, Accessories, paint) by copying and pasting the window for plate offset

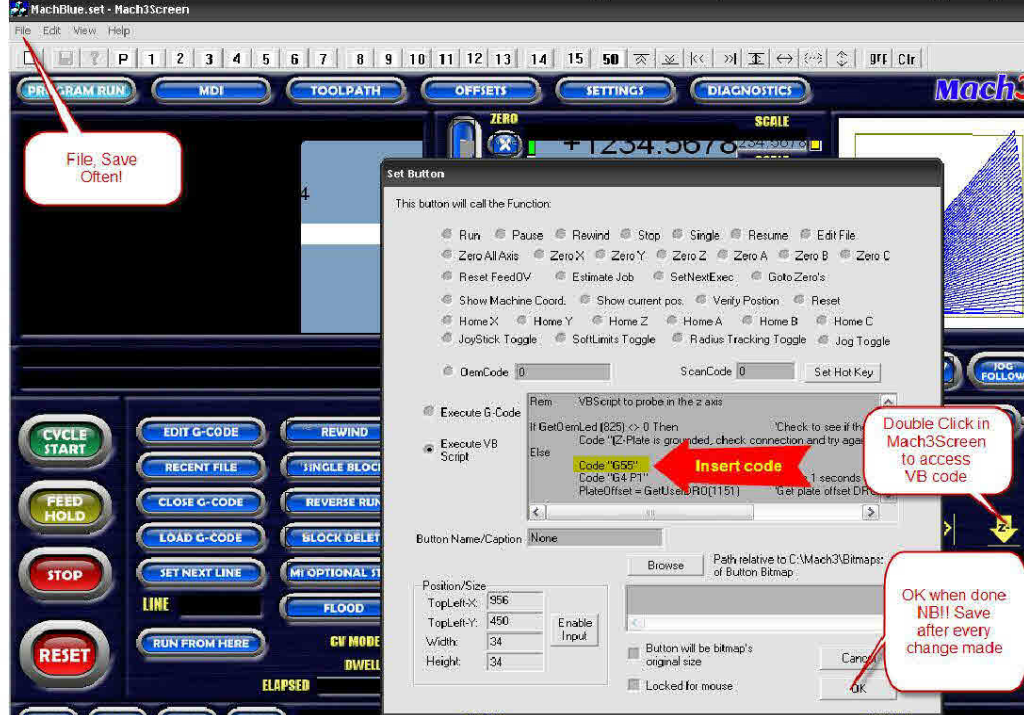


Click select tool, select the part of the bitmap you want, copy and paste to the new position (CTRL+C and CTRL+V) or via the edit menu

Using Mach3Screen <http://www.machsupport.com/downloads/Mach3Screen.zip>

Before starting it is a good idea to make a backup copy of the .set file you are going to edit
You will need it, undo doesn't work well

Open Mach3screen and the file MachBlueTiagmm.set (or MachBlueTiag.set)

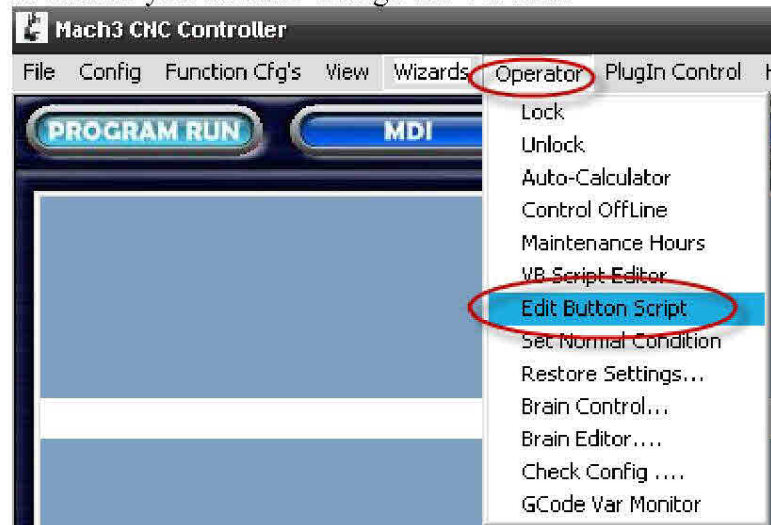


Double click on the button to edit VB code

In the code window code can be changed or added to suit you needs

I is important to save after every change

In Mach3 you can also change the VB code



Click Menu Operator and then Edit button script (you need to go through these menus for each button, "edit button script" doesn't stay active)

This doesn't seem to work if you have not created a script for the button yet, first define the script in Mach3Screen.

```

HiddenScript.mis - Mach3 VB Script Editor
File Edit Run Debug BreakPoints

Rem VBScript to probe in the z axis
If GetOemLed (825) < 0 Then 'Check to see if the probe is already grounded or faulty
    Code "(Z-Plate is grounded, check connection and try again)" 'this goes in the status bar if applicable
Else
    Code "G4 P1" 'Pause 1 seconds to give time to position probe plate
    PlateOffset = GetUserDRO(1151) 'Get plate offset DRO
    CurrentFeed = GetOemDRO(818) 'Get the current feedrate to return to later
    Code "F50" 'slow down feedrate to 4 ipm

    Rem Probe in the z direction
    ZNew = GetDro(2) - 25 'probe moves to current z - 2 inches
    Code "G31Z" &ZNew
    While IsMoving() 'wait for probe move to finish
    Wend

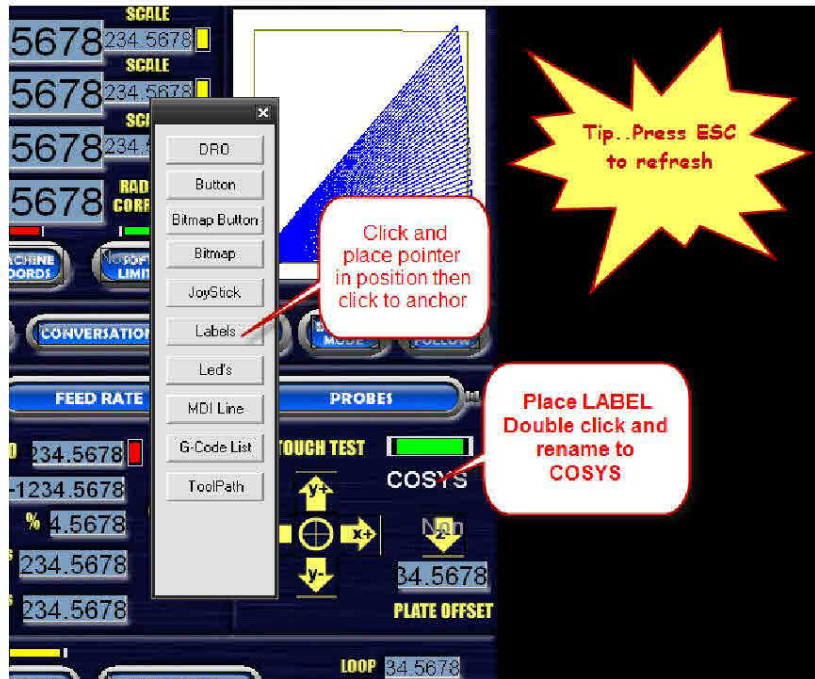
    ZNew = GetVar(2002) 'read the touch point
    Code "G0 Z" &ZNew 'move back to hit point incase there was overshoot
    While IsMoving()
    Wend

    If PlateOffset < 0 Then
        Call SetDro (2, PlateOffset) 'set the Z axis DRO to plate thickness
        Code "G4 P0.25" 'Pause for Dro to update.
        ZNew = PlateOffset + 4
        Code "G0 Z" &ZNew 'put the Z retract height you want here
        Code "(Z axis is now zeroed)" 'puts this message in the status bar.
    End If
    Code "F" &CurrentFeed 'Returns to prior feed rate
End If

```

The code can be edited here, remember to Save

Back to Mach3Screen



Adding labels

To add bitmap buttons it is basically the same procedure click Bitmap button, place and resize over the button bitmap. Double click the bitmap button and edit (the example is for Button G55)

