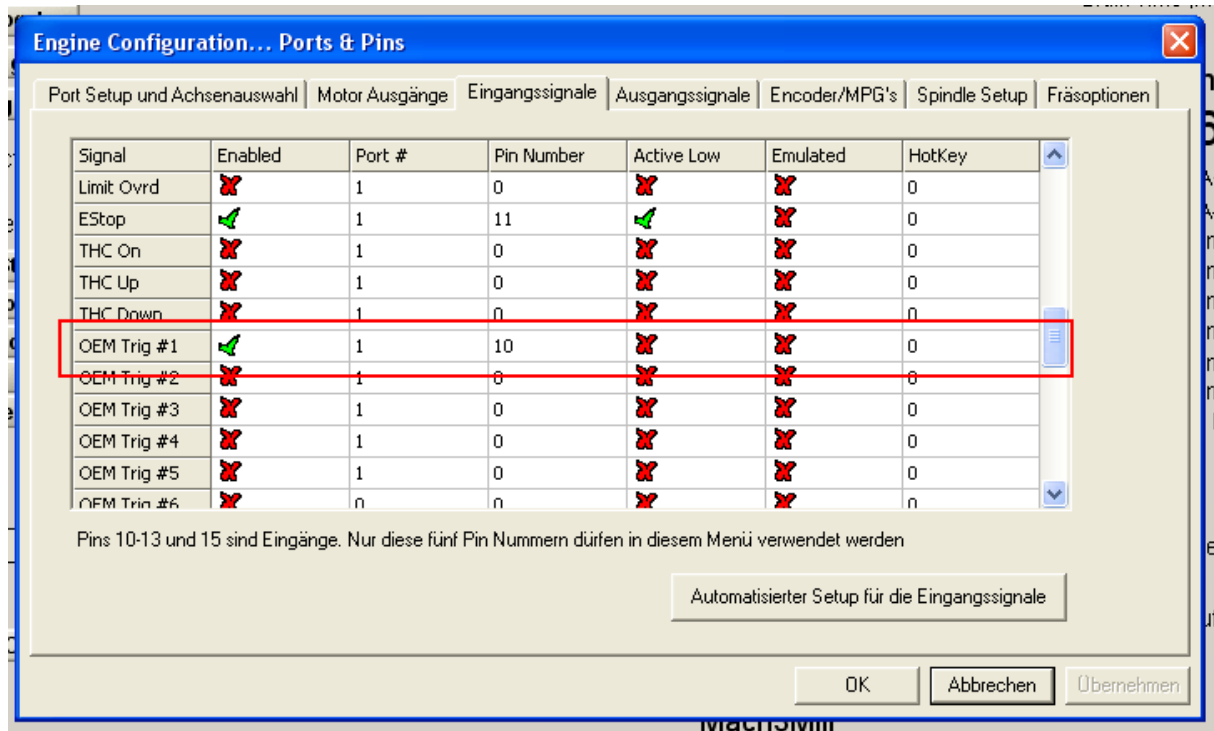
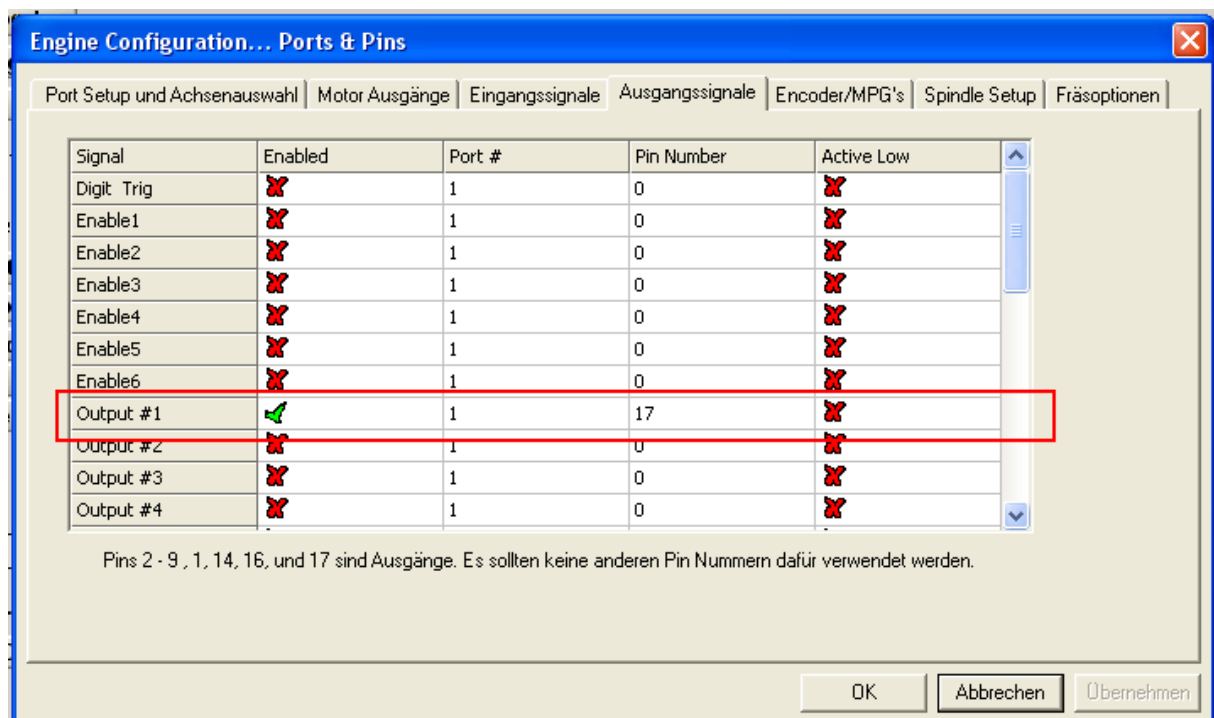


How to toggle an output by input

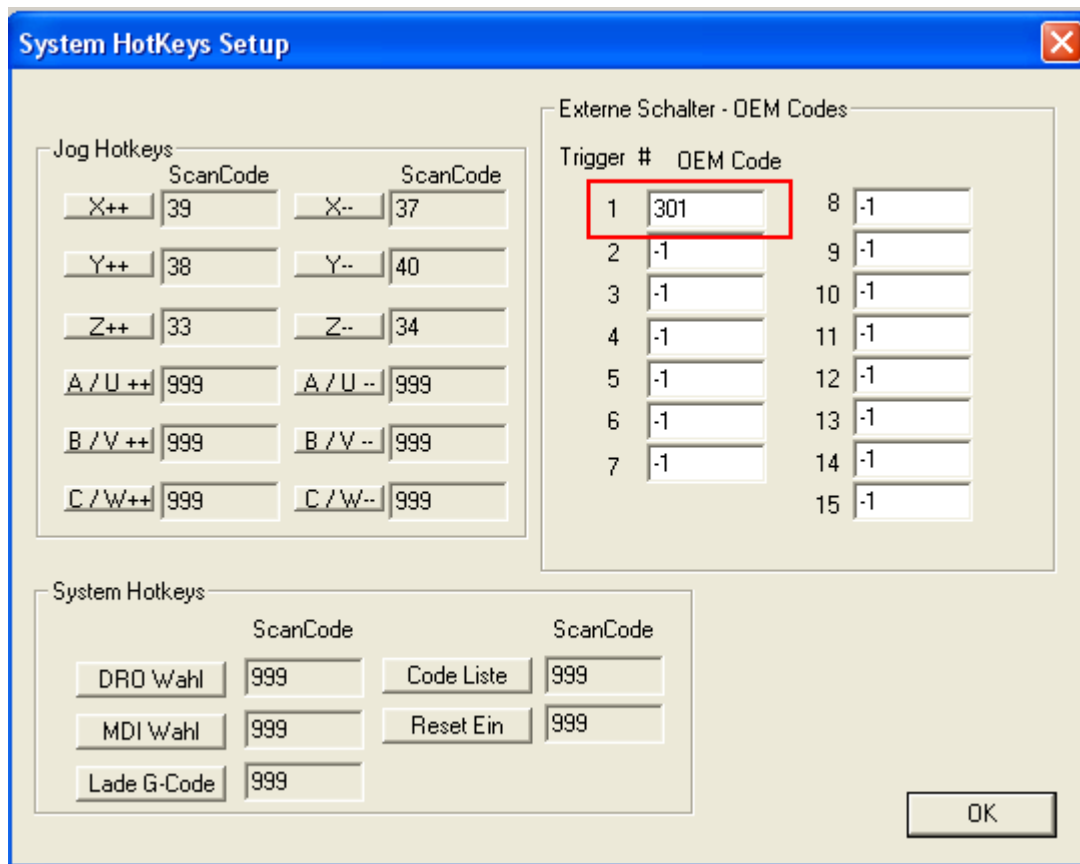
First assigne input port/pin to OEMTrigger in config->ports&pins -> inputs



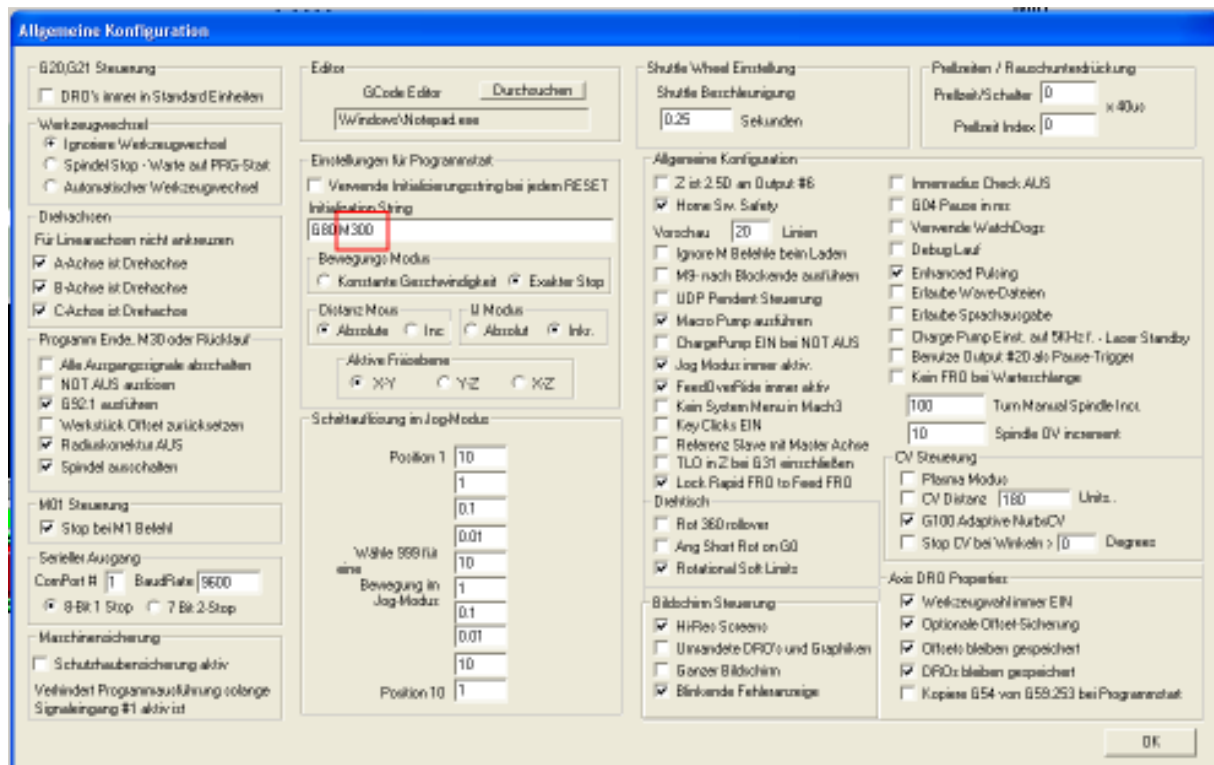
Then assigne your output in config->ports&pins -> outputs



Then configure the oemTrigger in config -> system hotkeys

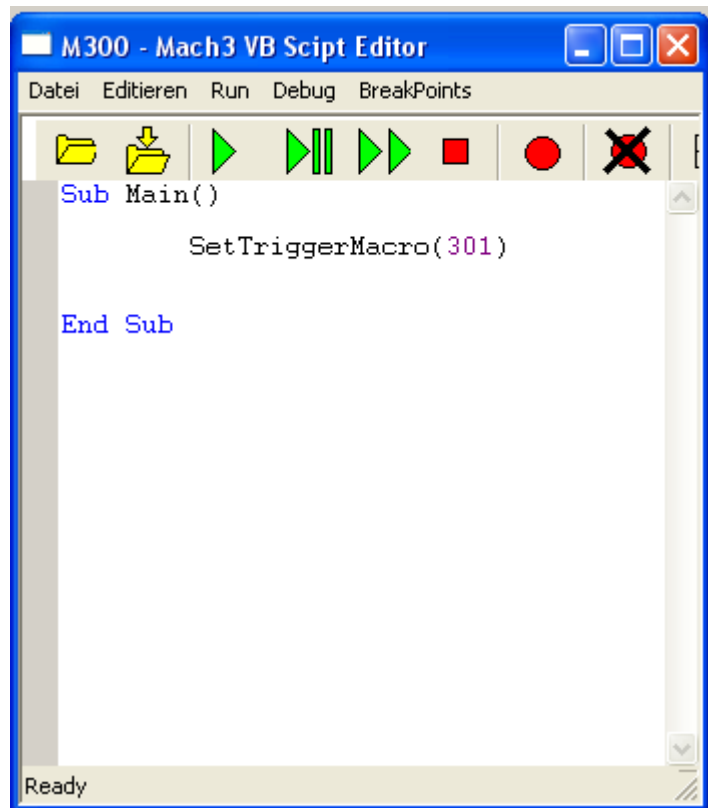


Now we add the initialize macro to the reset so its working after each reset config -> general config



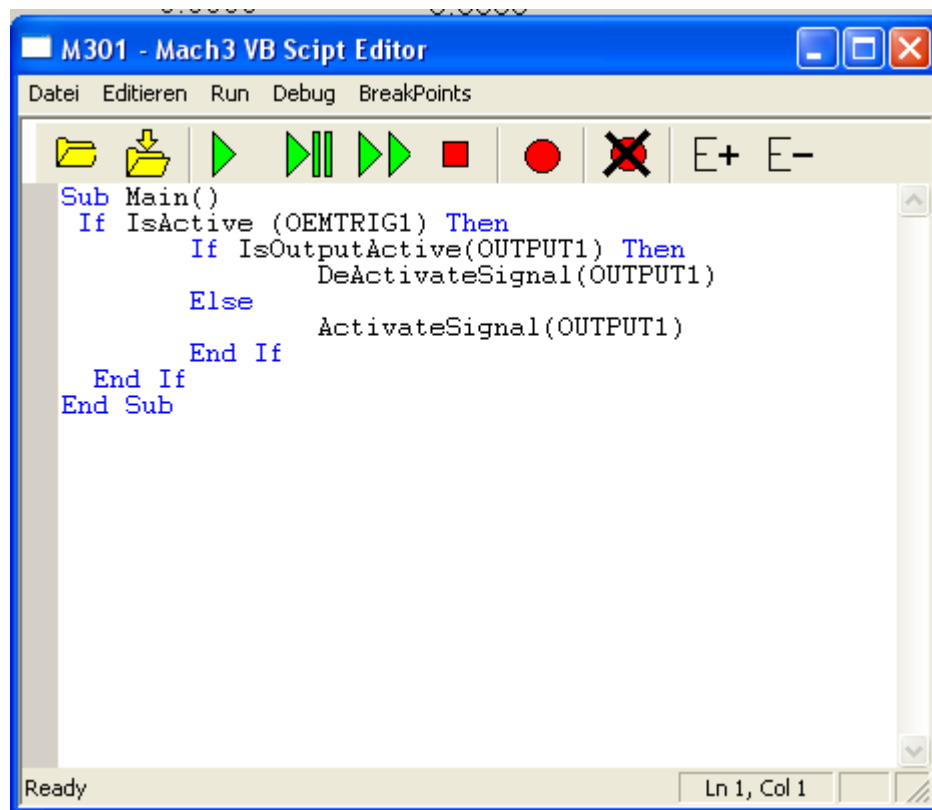
Ok time for this first macro to set the triggermacro wright

Open operator VB script editor create a macro like shown



And save it under \Mach3\macros\your profile name\M300.m1s

Create a new macro like shown



And save it under \Mach3\macros\your profile name\M301.m1s

Restart Mach3 and test.