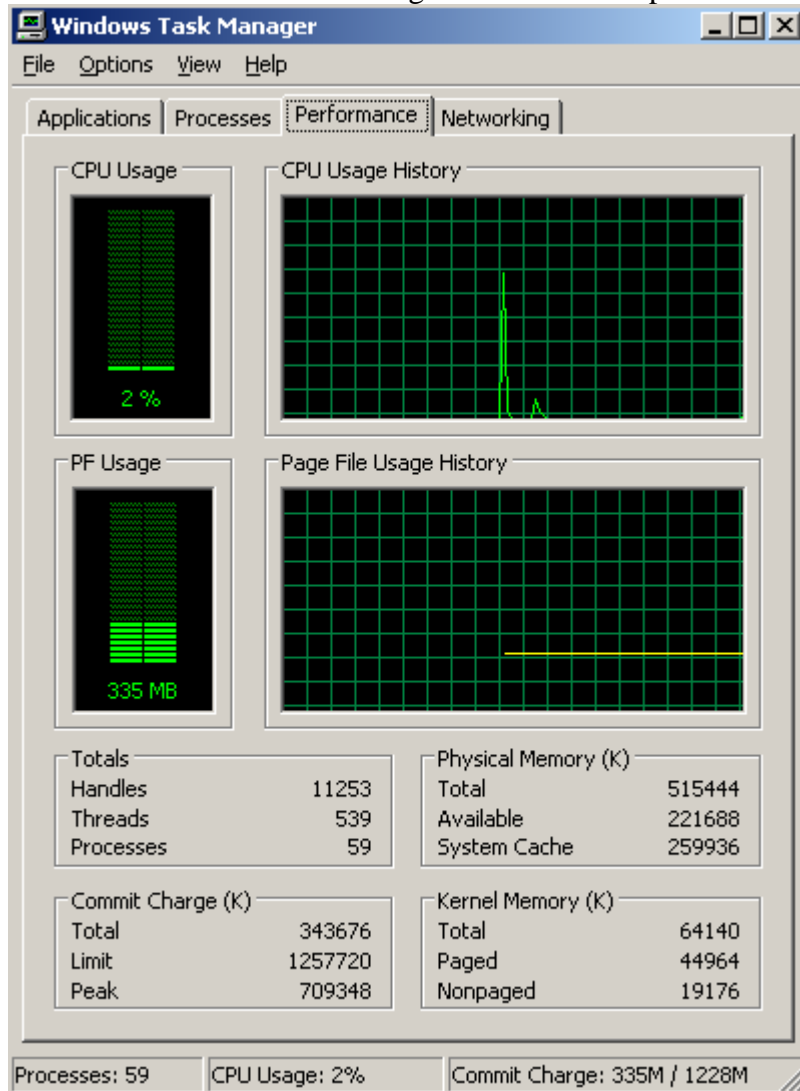


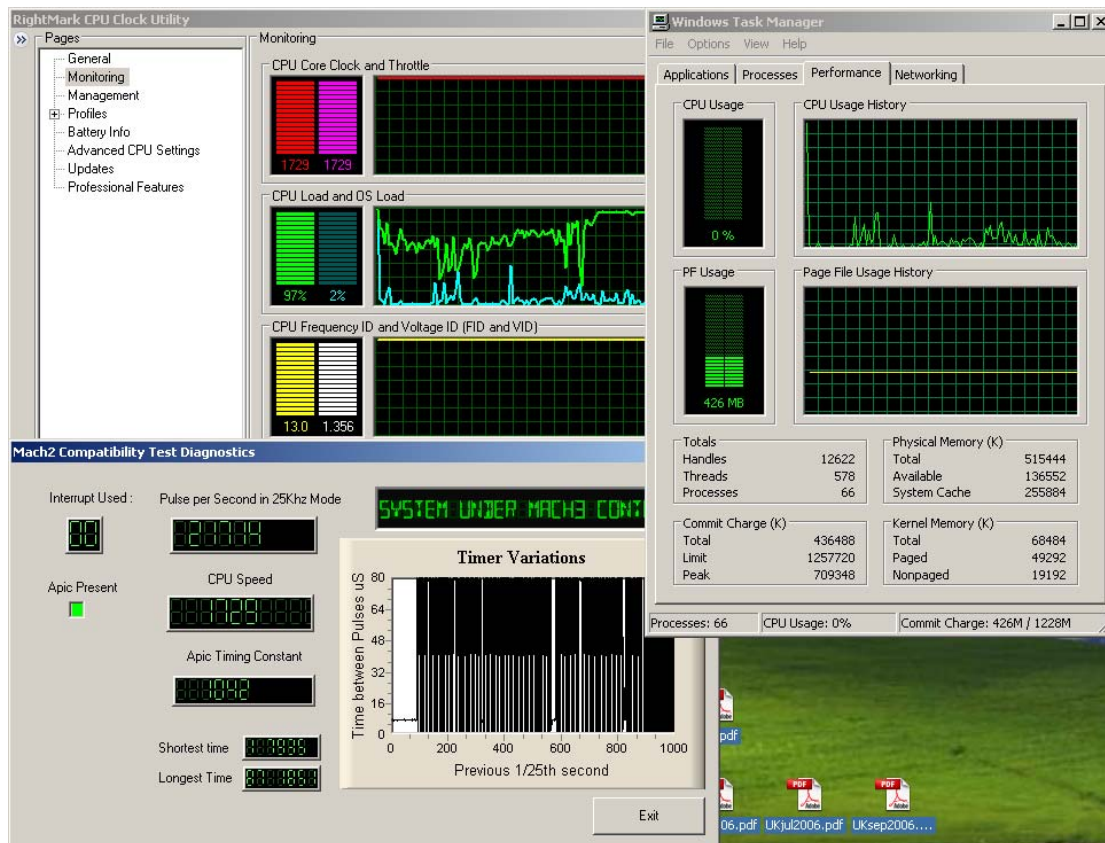
How to run Mach3 on a laptop

New processors like Centrino are optimized for mobile environment. This means that are rising and slowing the CPU speed and voltage according to how many tasks they have to do.

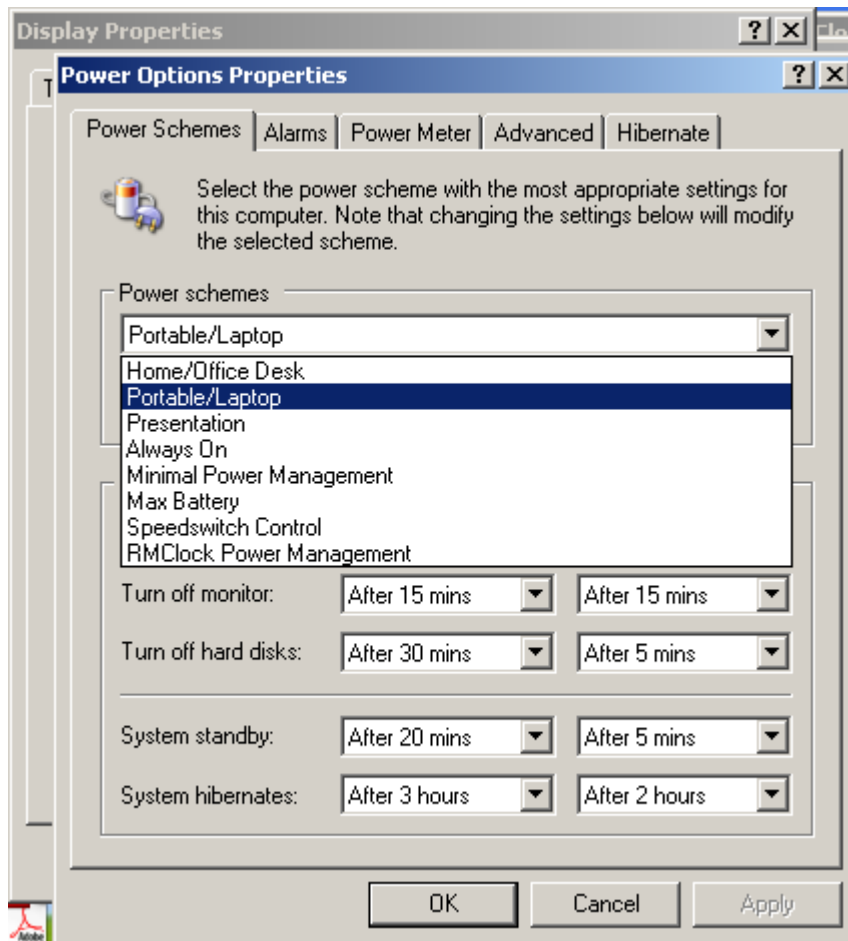
Even if on Windows task manager shows that the processor is „free” :



The Mach3 cannot run on that machine. Timer variations from DriverTest are huge.



Some people are saying that if you choose the „Always On” power scheme the processor will allocate the maximum of speed for current processes. Worth to try it but for me didn't give any positive results (regarding Mach usability).

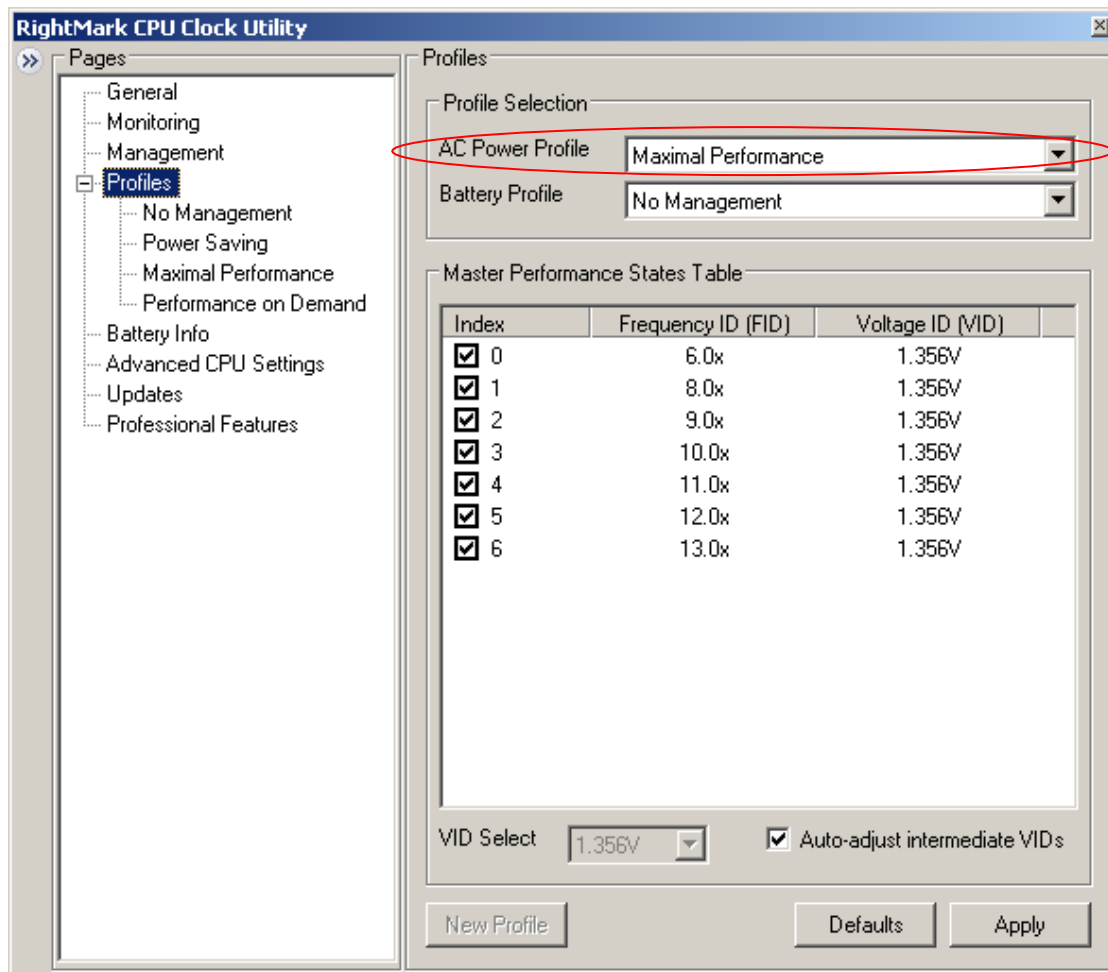


On internet are available 3 or 4 softwares wich are pretending that can manage StepSpeed facility wich resides in mobile Intel processors.

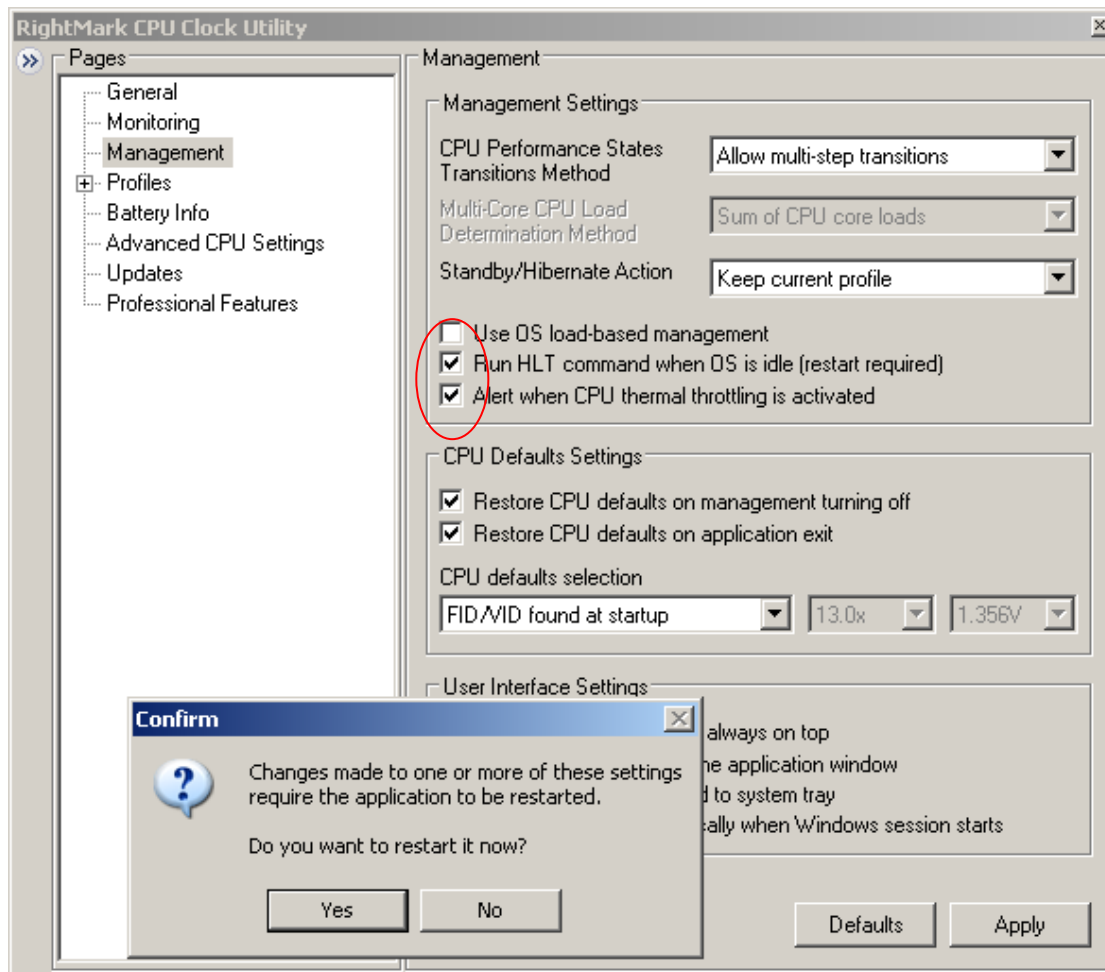
I have tryed all of them but only with CPU RightMark I was able to run Mach3 on laptop.

So :

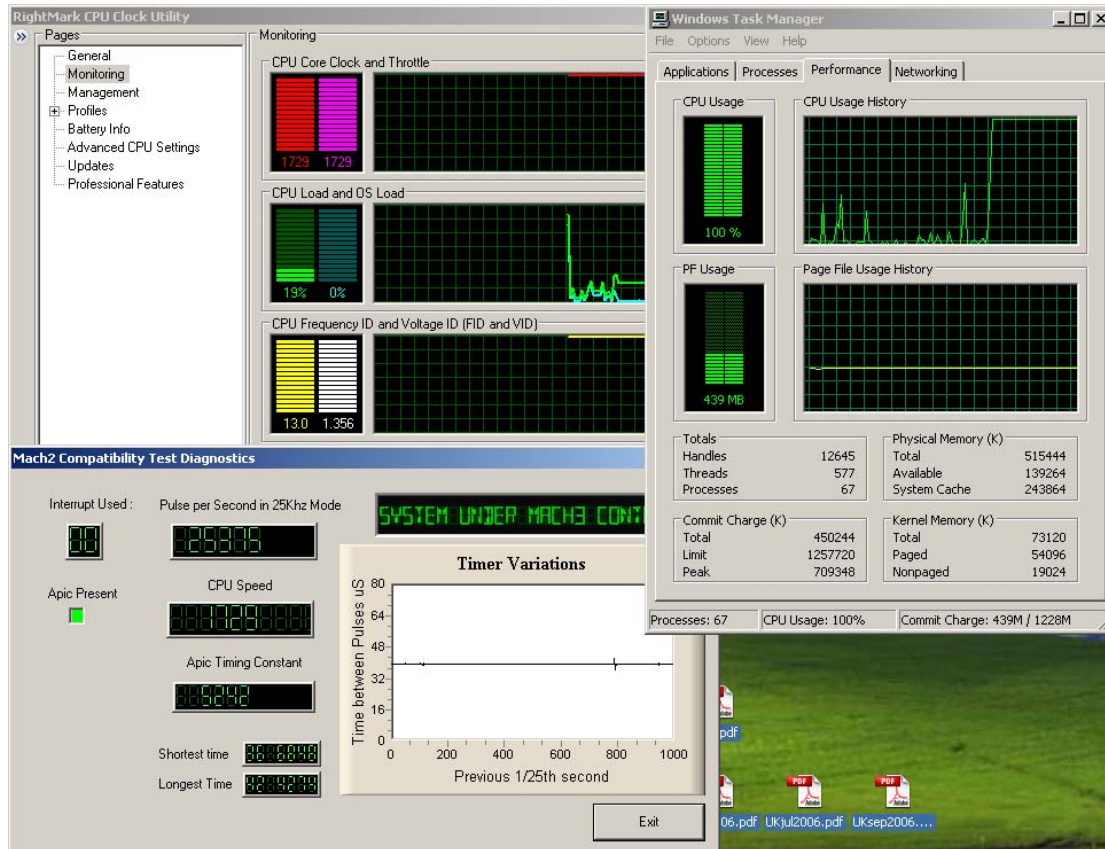
1. Download and install the CPU RightMark from <http://cpu.rightmark.org/>
2. On the profiles screen from RightMark for „ac power profile” select „Maximal Performance”.



3. Check the „Run HLT command when OS is idle” , uncheck the „Use OS load based management” and click apply. It will ask for restart and click ok to restart. It is not about to restart the whole system it will restart only the RightMark CPU application.



4. Now when you run again DriverTest it will run very nice.



Strange, the DriverTest is showing small variations, the RightMark CPU shows a small CPU load BUT the Windows Task manager shows that the processor is on „the ceiling”.

Looking to task manager at the processes section you'll see that one process RMClockHLT is taking 98% of processor (instead of System Idle process).

