

OPERATION SEQUENCES 10 & 20

SCALE: 1/4



DRAWN:	T.G.SOTER	3/23/98
DESIGN ENGINEER:	M.SADOSKI	4/2/98
MFG ENGINEER:		
QUALITY CONTROL:		
ENG SUPERVISOR:	D.BINNALL	4/13/98
MATERIAL:	SEE B.O.M.	
FINISH:		
HEAT TREAT:		

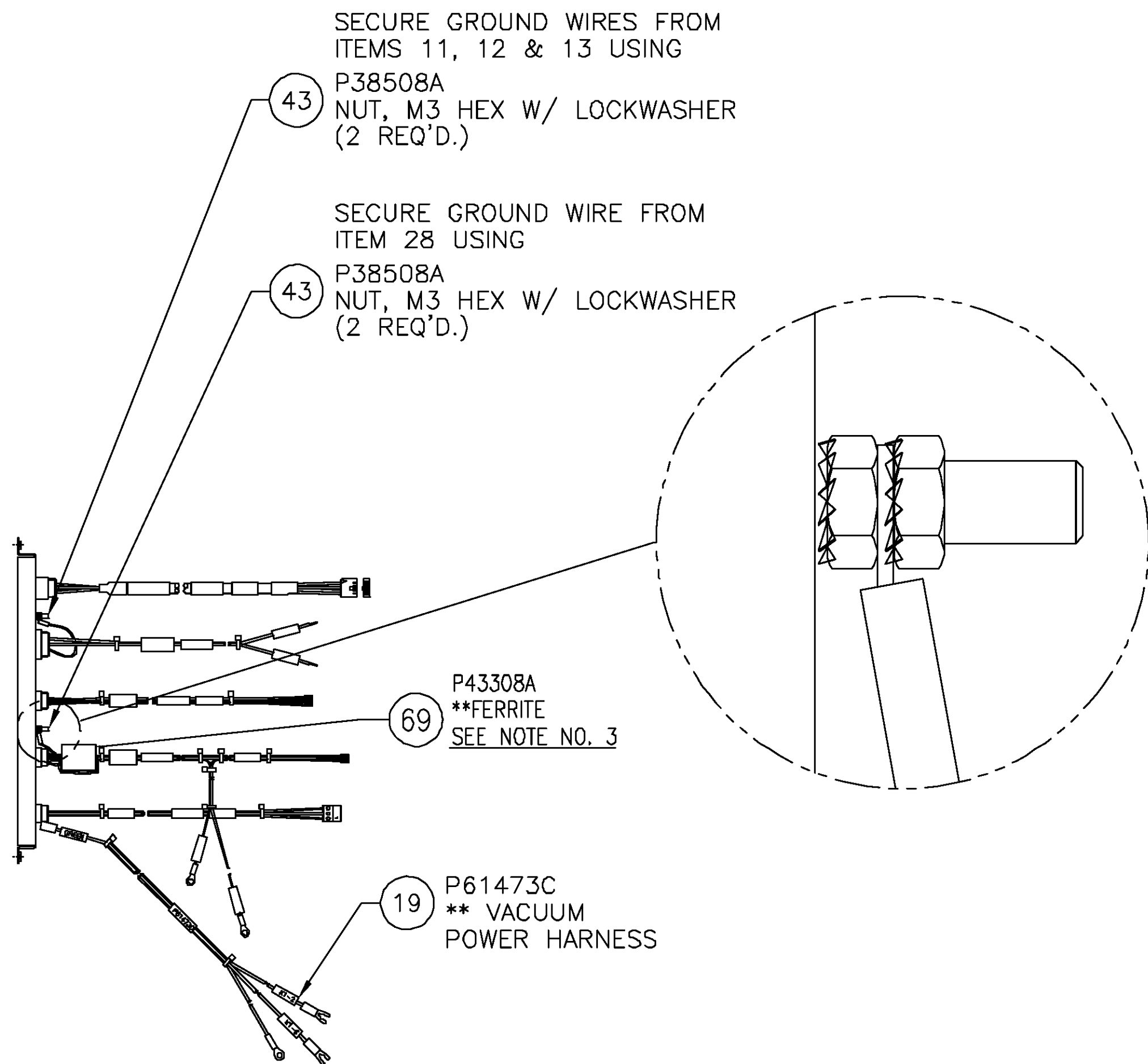
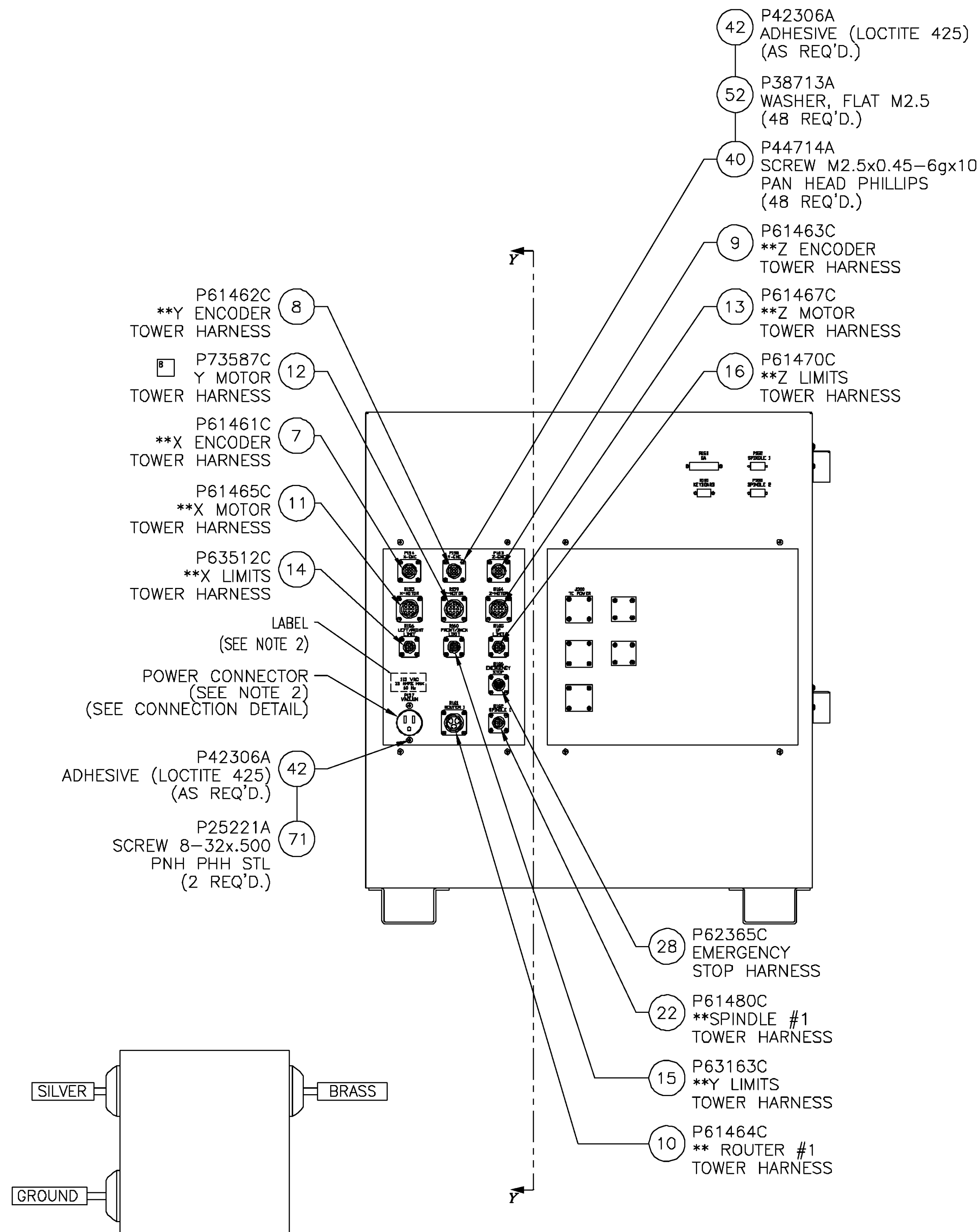
THIS PRINT IS THE PROPERTY OF GERBER SCIENTIFIC PRODUCTS, INC. AND MUST NOT BE REPRODUCED EITHER IN FULL OR IN PART WITHOUT WRITTEN APPROVAL FROM GERBER SCIENTIFIC PRODUCTS, INC.

REVISIONS			
SYMBOL	DESCRIPTION	DATE	APPROVAL
1	PRELIMINARY	3/23/98	
A	EC P51504 INITIAL RELEASE	3/23/98	MS RB
B	EC P53891 SEE SHEETS 2,3, & 4 FOR CHANGES	7/15/00	
C	EC 590 SEE SHEET 4	8/17/01	
D	EC 993 SEE SHEET 4	8/22/02	
E	EC 11293 PICTORIALLY UPDATED OPTION PNL	7/26/05	
F	EC 11329 ADDED ITEM 83 AND NOTE 3	8/27/05	

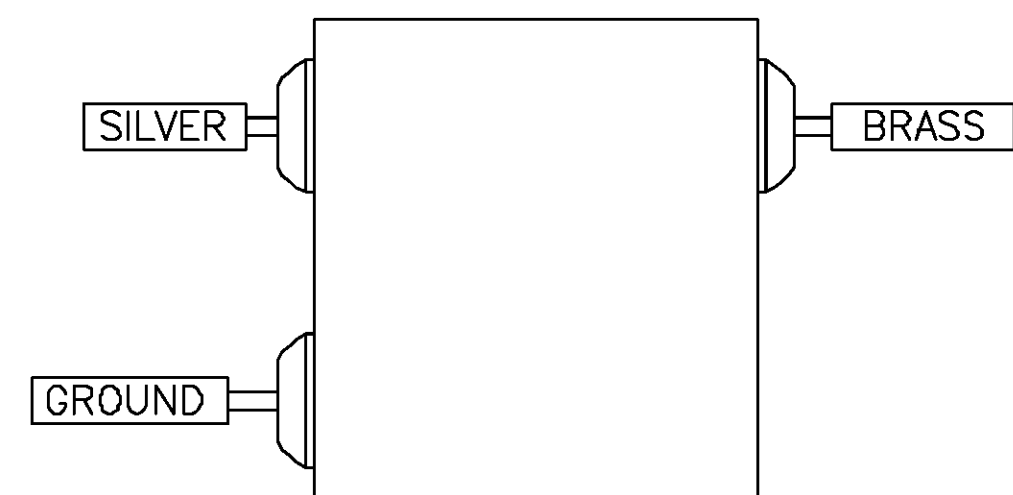
NOTES

- 1) REFER TO ASSEMBLY PROCEDURE FOR SEQUENCE OF ASSEMBLY OPERATIONS.
- 2) REFER TO HIGHER LEVEL B.O.M. FOR PART NUMBER & DESCRIPTION.
- 3) APPLY WEE LABEL IMMEDIATELY NEXT TO THE MANUFACTURER'S LABEL.

Gerber Scientific Products		151 Batson Dr., Manchester, CT 08040 (860) 643-1515
NAME		
PROCESS-BASIC ELECTRICAL TOWER		
MODEL NO	DRAWING NUMBER	REV.
R4	P67656D	F
SCALE AS NOTED	SHEET 1 OF 4	



PARTIAL SECTION Y-Y



POWER CONNECTOR CONNECTION
(VIEW OF REAR OF CONNECTOR)

OPERATION SEQUENCE 30

SCALE: 1/4

REVISIONS			
SYMBOL	DESCRIPTION	DATE	APPROVAL
1	PRELIMINARY	3/23/98	
A	EC P51504 INITIAL RELEASE	3/25/98	MB
B	EC P53891 ITEM 12 WAS P61466C RMV'D. ** FROM DESCRIPTION	8/27/00	
C	EC 590 SEE SHEET 4	8/7/01	
D	EC 993 SEE SHEET 4	8/2/02	
E	EC 11293 PICTORIALLY UPDATED OPTION PNL	8/25/05	
F	EC 11329 SEE SHEET 1	8/25/05	

NOTES

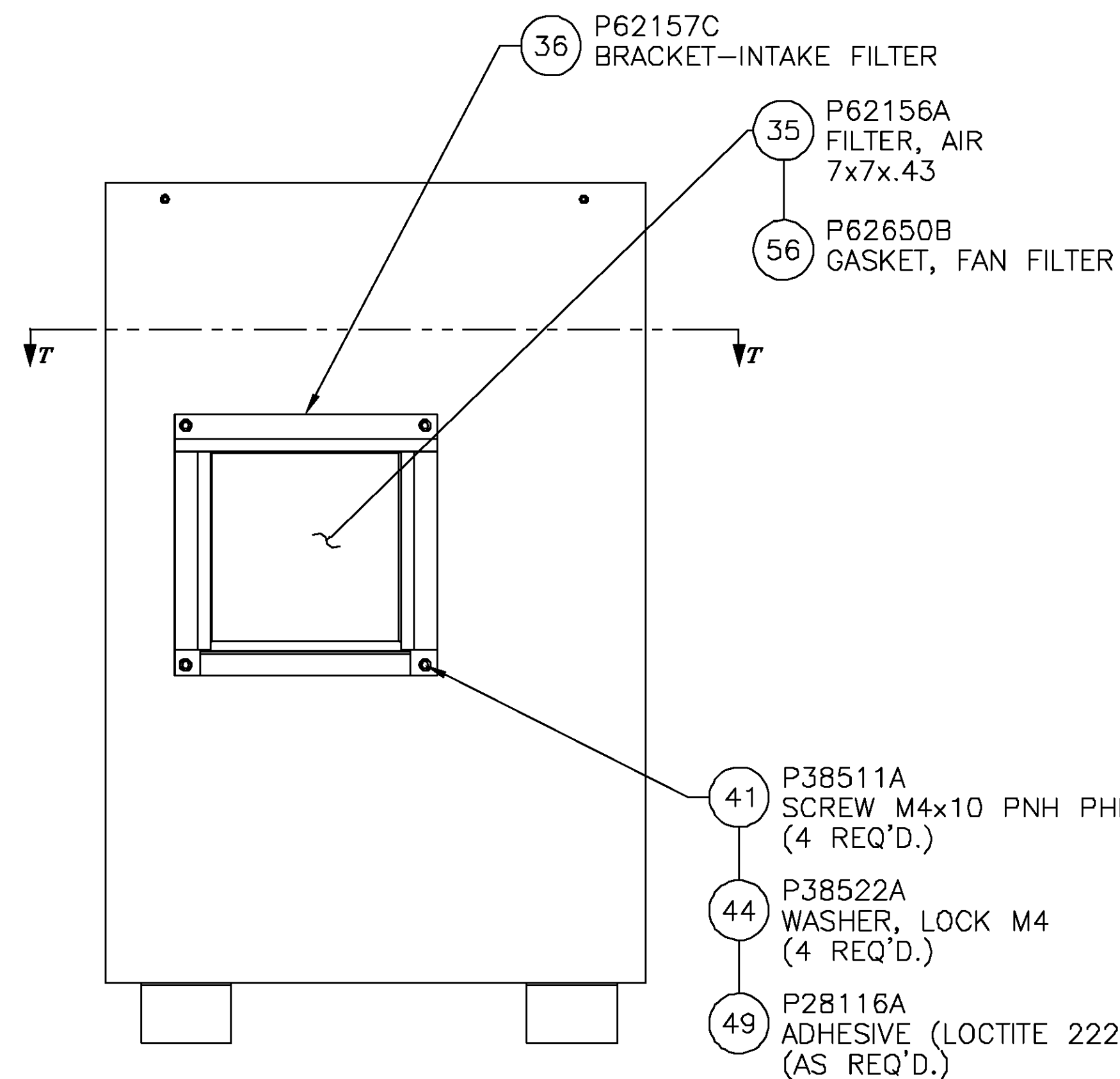
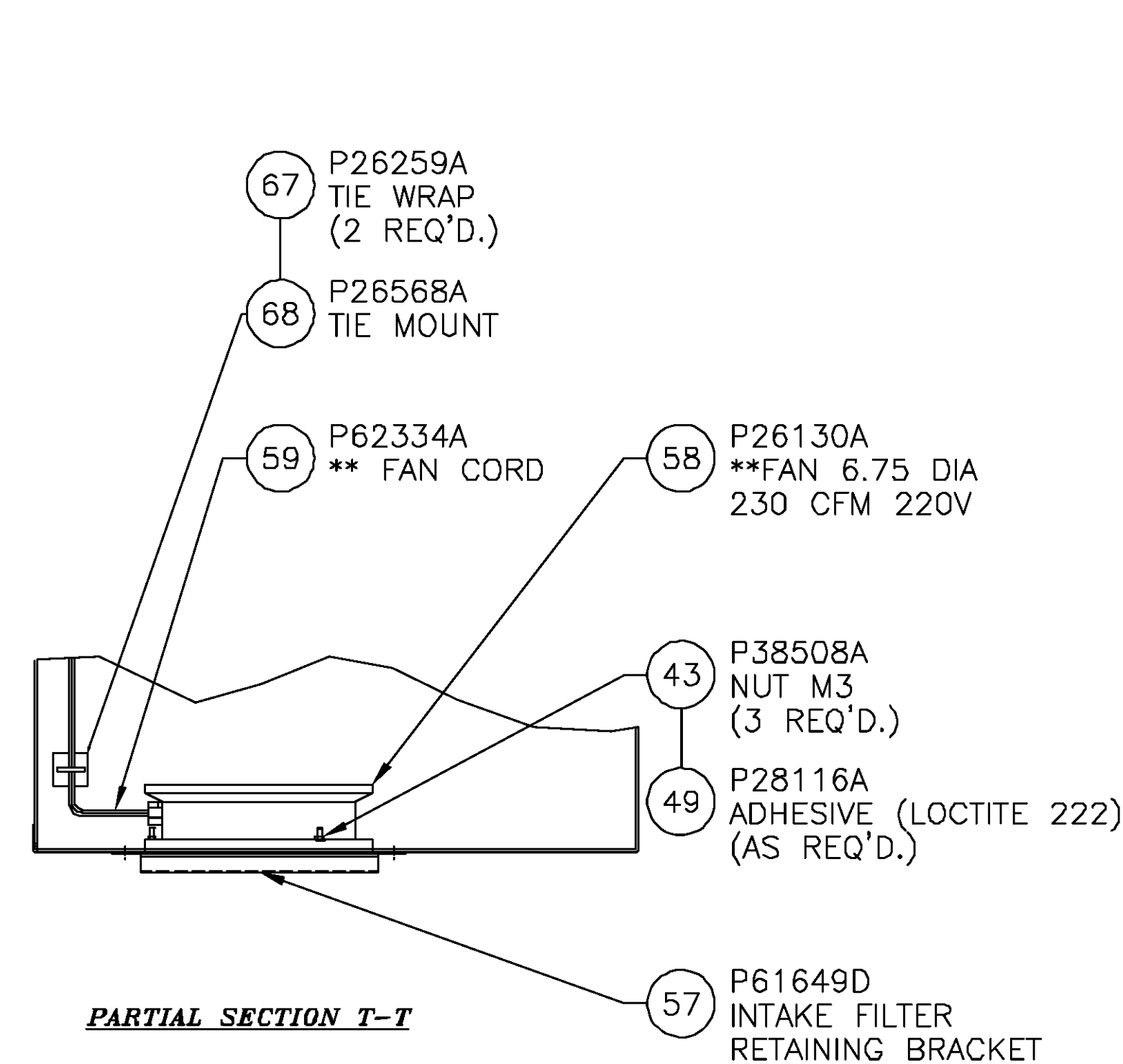
- 1) REFER TO ASSEMBLY PROCEDURE FOR SEQUENCE OF ASSEMBLY OPERATIONS.
- 2) REFER TO HIGHER LEVEL B.O.M. FOR PART NUMBER & DESCRIPTION.
- 3) ALL HARNESS WIRES TO MAKE ONE LOOP THROUGH FERRITE.



DRAWN:	T.G.SOTER	3/23/98
DESIGN ENGINEER:	M.SADOSKI	4/2/98
MFG ENGINEER:		
QUALITY CONTROL:		
ENG SUPERVISOR:	D.BINNALL	4/13/98
MATERIAL:	SEE B.O.M.	
FINISH:		
HEAT TREAT:		

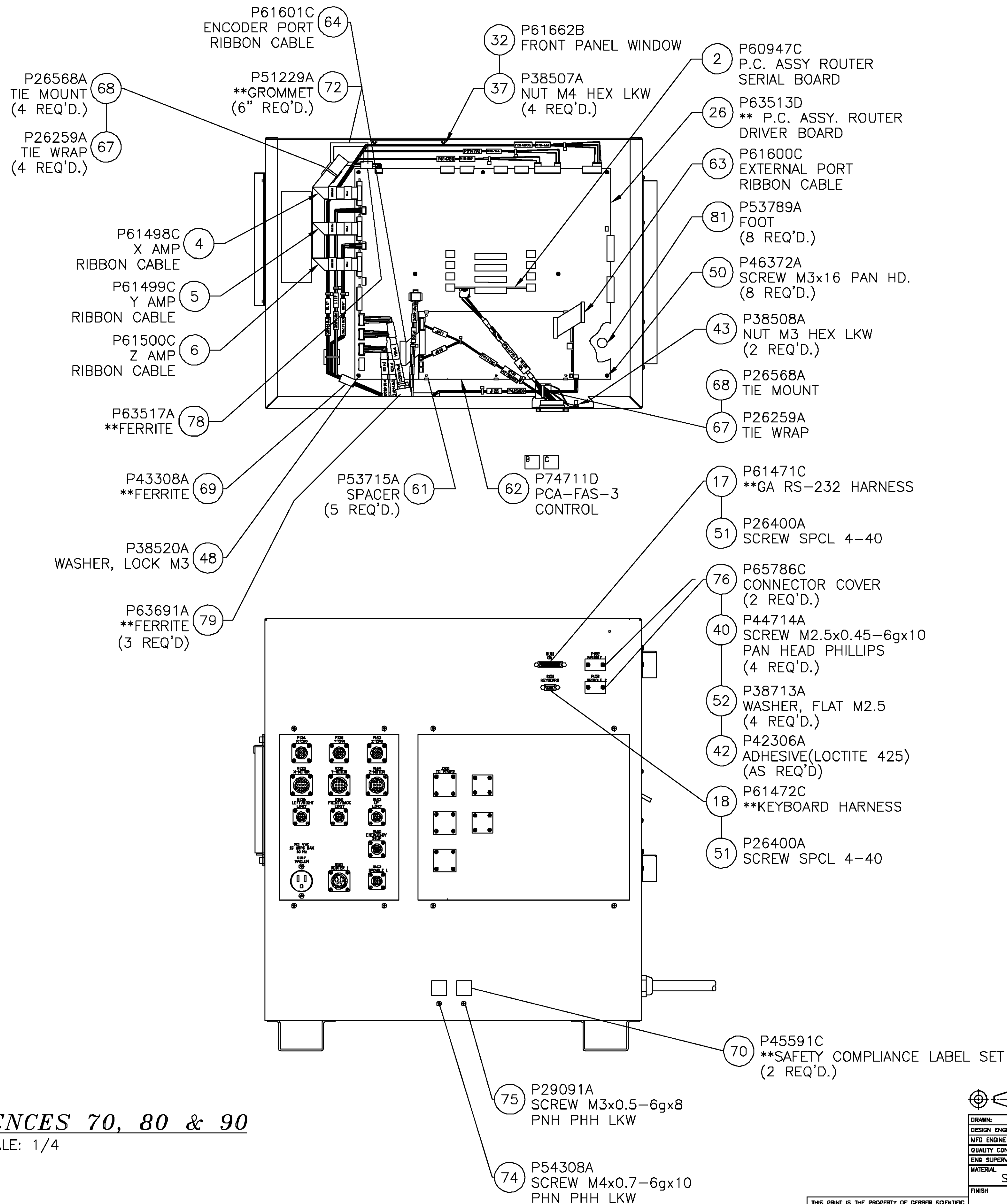
THIS PRINT IS THE PROPERTY OF GERBER SCIENTIFIC PRODUCTS, INC. AND MUST NOT BE REPRODUCED EITHER IN FULL OR IN PART WITHOUT WRITTEN APPROVAL FROM GERBER SCIENTIFIC PRODUCTS, INC.

Gerber Scientific Products		151 Bolton Dr., Manchester, CT 08040 (860) 643-1515
NAME		
PROCESS-BASIC ELECTRICAL TOWER		
MODEL NO	DRAWING NUMBER	REV.
R4	P67656D	F
SCALE AS NOTED	SHEET 2 OF 4	



OPERATION SEQUENCES 70, 80 & 90

SCALE: 1/4



REVISIONS			
SYL.	DESCRIPTION	DATE	APPROVAL
1	PRELIMINARY	3/23/98	
A	EC P51504 INITIAL RELEASE	3/23/98	MSB
B	EC P53891 ITEM 62 WAS P67662D	7/13/00	
C	EC 590 REMOVED ITEM 77 (SEE BOM)	8/17/01	
D	EC 993 ITEM 62 WAS P69278D	10/6/02	
E	EC 11293 PICTORIALY UPDATED OPTION PNL	7/23/05	
F	EC 11329 SEE SHEET 1	10/23/05	

NOTES

1) REFER TO ASSEMBLY PROCEDURE
FOR SEQUENCE OF ASSEMBLY
OPERATIONS.

THIRD ANGLE
PROJECTION

DESIGN:	T.G.SOTER	3/23/98
DESIGN ENGINEER:		
MFG ENGINEER:	M.SADOSKI	4/2/98
QUALITY CONTROL:		
ENG SUPERVISOR:	D.BINNALL	4/13/98
MATERIAL:	SEE B.O.M.	
FINISH:		
HEAT TREAT:		

THIS PRINT IS THE PROPERTY OF GERBER SCIENTIFIC
PRODUCTS, INC. AND MUST NOT BE REPRODUCED
EITHER IN FULL OR IN PART WITHOUT WRITTEN APPROVAL
FROM GERBER SCIENTIFIC PRODUCTS, INC.

Gerber Scientific Products		151 Batson Dr., Manchester, CT 08040 (860) 643-1515
NAME		
PROCESS-BASIC ELECTRICAL TOWER		
MODEL NO	DRAWING NUMBER	REV.
R4	P67656D	F
SCALE AS NOTED	SHEET 4 OF 4	

BOM for P67656D

PROCESS-BASIC ELECTRICAL TOWER

Item	Obj	Object description	Quantity
0001	P61658S	**CONSOLE BASE & SIDES	1.000
0002	P60947C	P.C. ASSY ROUTER SERIAL BD	1.000
0003	P61497C	TOWER DC HARNESS	1.000
0004	P61498C	SABRE ATC X AMP RIBBON CABLE	1.000
0005	P61499C	SABRE ATC Y AMP RIBBON CABLE	1.000
0006	P61500C	SABRE ATC Z AMP RIBBON CABLE	1.000
0007	P61461C	**X ENCODER TOWER HARNESS	1.000
0008	P61462C	SABRE ATC Y ENCODER TOWER HARNESS	1.000
0009	P61463C	**Z ENCODER TOWER HARNESS	1.000
0010	P61464C	**ROUTER #1 TOWER HARNESS	1.000
0011	P61465C	**X MOTOR TOWER HARNESS	1.000
0012	P73587C	Y MOTOR TOWER HARNESS	1.000
0013	P61467C	SABRE Z MOTOR TOWER HARNESS	1.000
0014	P63512C	**X LIMITS TOWER HARNESS	1.000
0015	P63163C	**HARNESS, Y LIMITS TOWER	1.000
0016	P61470C	** Z LIMITS TOWER HARNESS	1.000
0017	P61471C	**GA RS-232 HARNESS	1.000
0018	P61472C	**KEYBOARD HARNESS	1.000
0019	P61473C	**VACUUM POWER HARNESS	1.000
0020	P61478C	VACUUM CONTROL HARNESS	1.000
0021	P61479C	ROUTER CONTROL HARNESS	1.000
0022	P61480C	**SPINDLE #1 TOWER HARNESS	1.000
0023	P62517D	**POWER SUPPLY	1.000
0025	P61521B	**AMPL SERVO 100V/8A	3.000
0026	P63513D	PCA ROUTER DRIVER BOARD	1.000
0027	P63133D	**PANEL COMPLIANT INPUT POWER	1.000
0028	P62365C	EMERGENCY STOP HARNESS	1.000
0029	P62518C	AMP DC POWER HARNESS	1.000
0030	P61191A	**CKT BKR 3P 250V 30A MTR DL	1.000
0031	P61661B	CIRCUIT BREAKER SHIELD	1.000
0032	P61662B	FRONT PANEL WINDOW	1.000
0035	P62156A	FILTER - AIR 7X7X.43	1.000
0036	P62157C	BRACKET - INTAKE FILTER	1.000
0037	P38507A	NUT M4x0.7-6Hx3.2 HEX LKW STL	7.000
0040	P44714A	SCREW M2.5x0.45-6gx10 PNH PHH	64.000
0041	P38511A	SCREW M4x0.7-6gx10 PNH PHH STL	5.000
0042	P42306A	ADHESIVE 1P BNDG LOW .004 GAP	1.000
0043	P38508A	NUT M3x0.5-6Hx2.4 HEX LKW STL	9.000
0044	P38522A	WASHER LK METRIC M4 EXT. TOOTH	5.000
0045	P61490A	SCREW M6x1.0-6gx16 SCH CAP STL	7.000
0046	P49742A	WASHER LK METRIC M6 EXT TOOTH	4.000
0047	P27000A	SCREW 6-32X0.250PNH.PHH.LKWASH	4.000
0048	P38520A	WASHER LK METRIC M3 EXT. TOOTH	4.000
0049	P28116A	ADHESIVE 1P LKG. LT. .005 GAP	1.000
0050	P46372A	SCREW M3x0.5-6gx16 PNH PHH STL	8.000
0051	P26400A	SCREW SPCL 04-40X.538 FEM-LOCK	2.000

BOM for P67656D

PROCESS-BASIC ELECTRICAL TOWER

Item	Obj	Object description	Quantity
0052	P38713A	WASHER FL METRIC M2.5 RGLR SST	52.000
0053	L62875A	**LBL-SABRE MFR'S (TOWER)	1.000
0054	P46008A	WSHR FL MET M6 18x1.6 THK STL	3.000
0055	P25279A	ADHESIVE,1P LKG. MED. .005 GAP	1.000
0056	P62650B	GASKET,FAN FILTER	1.000
0057	P61649D	INTAKE FILTER RETAINING BRKT	1.000
0058	P26130A	**FAN 6.75 DIA 230 CFM 220V	1.000
0059	P62334A	**FAN CORD 3'	1.000
0060	P38530A	NUT M5x0.8-6Hx5.1 HEX LKW STL	2.000
0061	P53715A	SPACER 0.875 NYLON SNAP-IN	5.000
0062	P74711D	PCA-FAS-3 CONTROL	1.000
0063	P61600C	EXTERNAL PORT RIBBON CABLE	1.000
0064	P61601C	ENCODER PORT RIBBON CABLE	1.000
0065	P40437A	SCREW M4x0.7-6gx40 SET CUP STL	1.000
0066	P25583A	TIE MT.0.75X0.75 ADHBACK NAT	4.000
0067	P26259A	TIE .14X08.50 INTMD	19.000
0068	P26568A	TIE MT.1.00x1.00 ADHBACK NAT	13.000
0069	P43308A	**FERRITE-SPLIT BEAD ID=0.512	2.000
0070	P45591C	**SAFETY COMPLIANCE LABEL SET	2.000
0071	P25221A	SCREW 08-32X0.500 PNH.PHH. SST	2.000
0072	P51229A	**GROM FLEX STRIP.071 MAX MATL	1.000
0073	P25585A	TIE .10X05.50 MINTR NAT	1.000
0074	P54308A	SCREW M4x0.7-6gx10 PNH PHH LKW	1.000
0075	P29091A	SCREW M3X0.5-6GX08.0MM PNH PHH	1.000
0076	P65786C	COVER, CONNECTOR	2.000
0078	P63517A	**FERRITE,SPLIT BEAD ID=0.280	1.000
0079	P63691A	**FERRITE SPLIT BEAD ID=0.39	3.000
0080	P63678B	WARNING TAG	1.000
0081	P53789A	FOOT 0.750DIAx0.38 HIGH W/ADH	8.000
0082	P65800B	**LABEL-HIGH LEAKAGE CURRENT	1.000
0083	P79572A	LABEL, WEEE, EN50419:2005, 10mm x 13mm	1.000