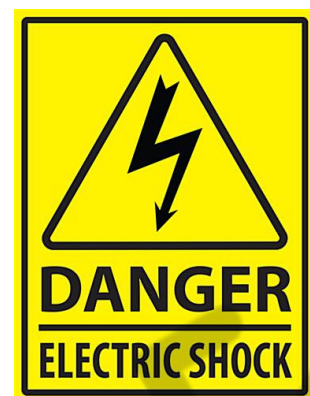


Bulk Man 3D STB5100 Wiring Diagram

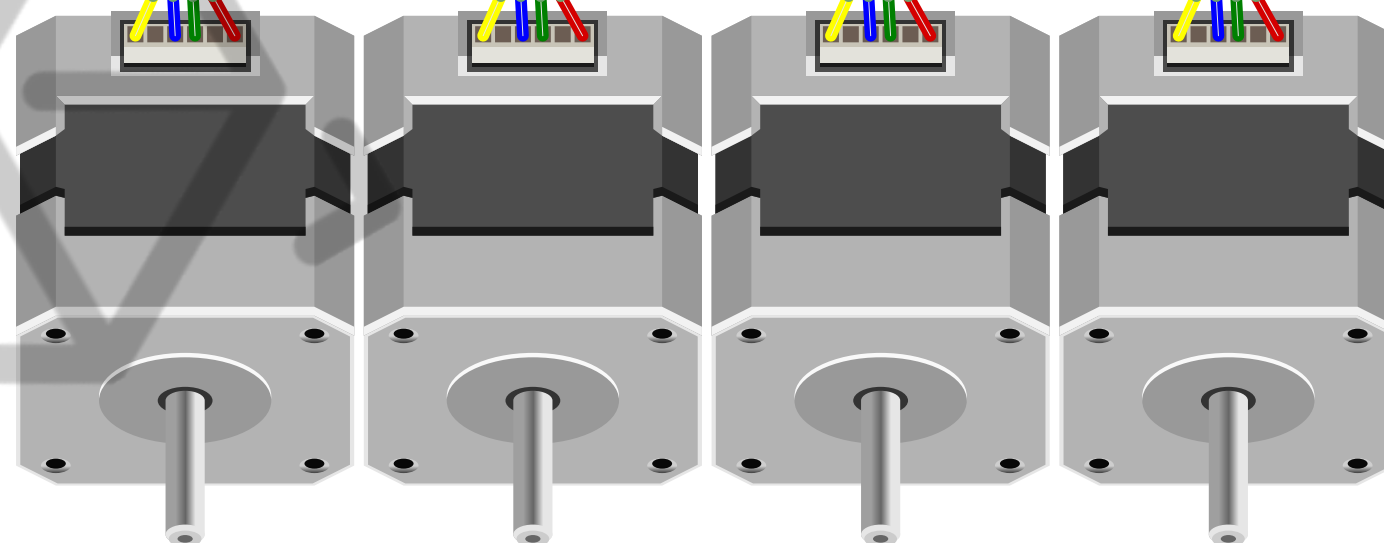
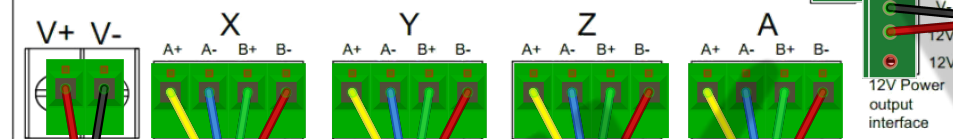
Power Supply



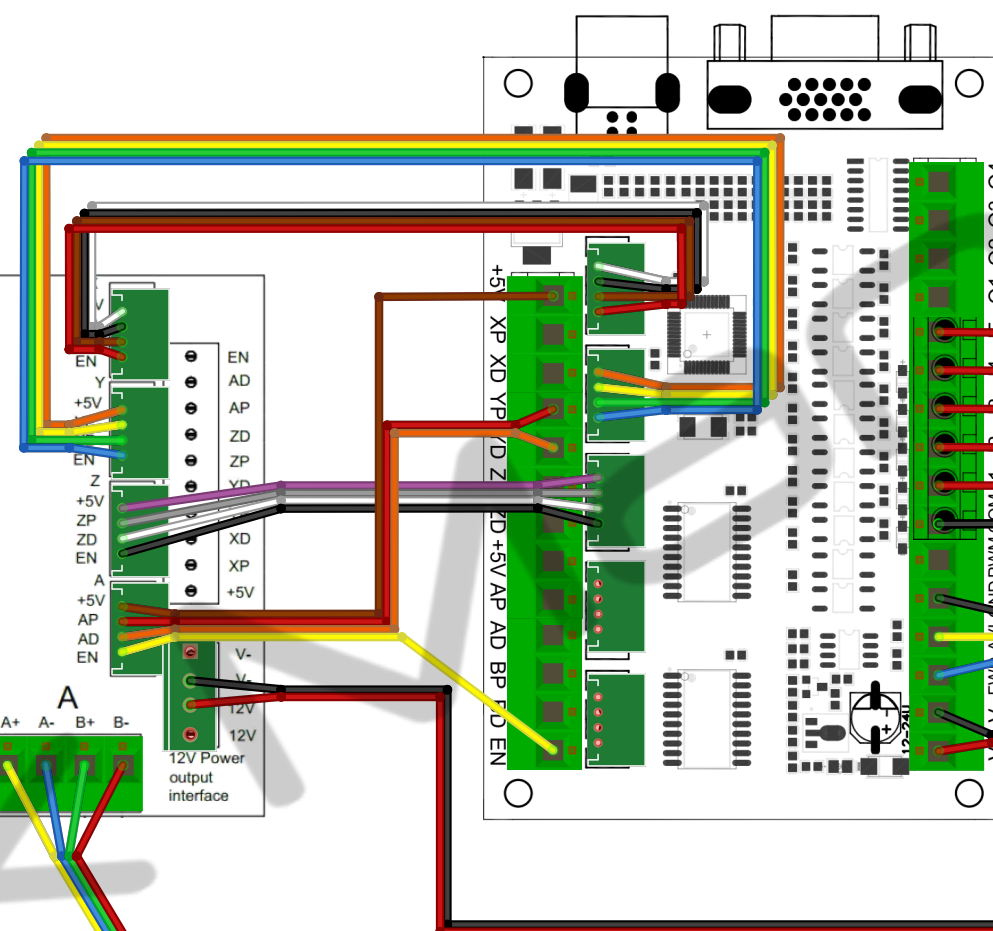
CAUTION:

Mains to be connected
by qualified person

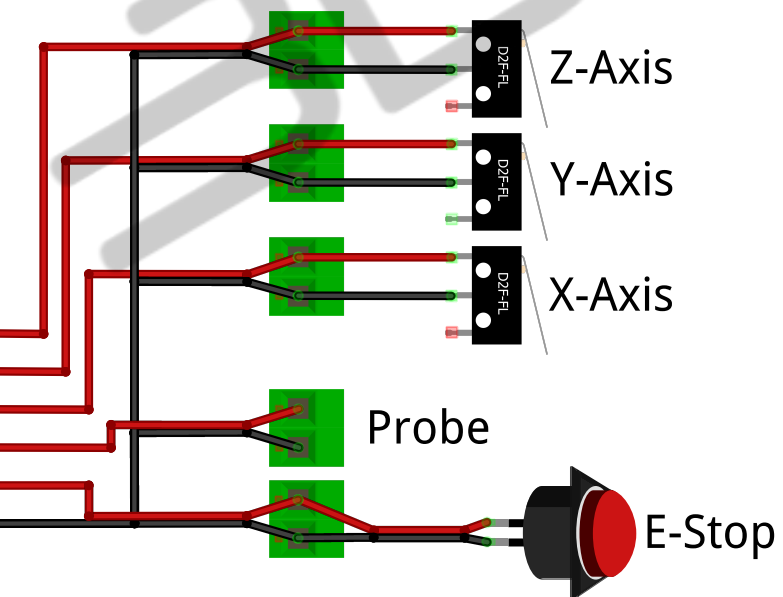
RYC TB6600-T4 4 Axis
stepper motor driver board



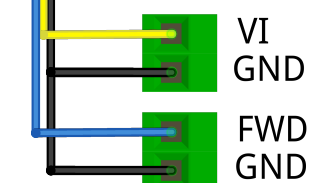
STB5100 Controller



Limit/Home Switches



VFD/Inverter



STB5100 CNC Controller

NEVER connect or disconnect any wire while
power is applied.

ALWAYS disconnect power before making any
connections or disconnections.

E&OE.

This diagram is for reference only. Prior to making any
connections read all manufacturer documentation and do your
own research. All wiring is to be done by a qualified person.
Failure to follow manufacture directions may result in electric
shock and may void any warranty.