

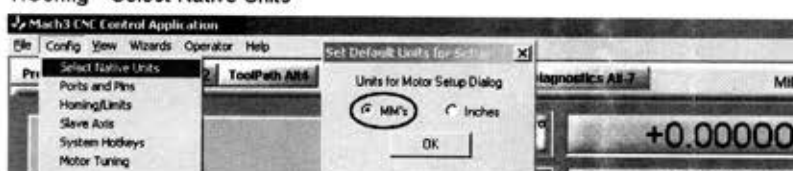
3020T-DJ & 3040T-DJ 3-axis CNC engraving machine MACH3 setting

◆ Computer configuration requirements: CPU-2GHz, Memory-512M, Hard disk-20G, screen-1024X768, WinXP.

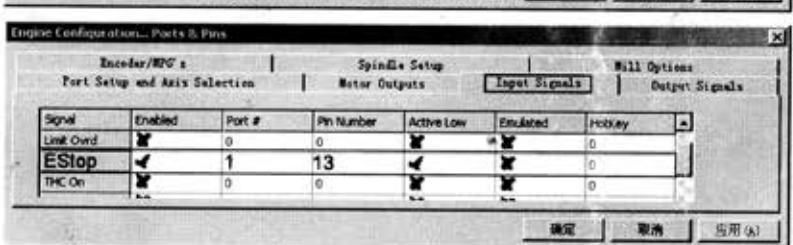
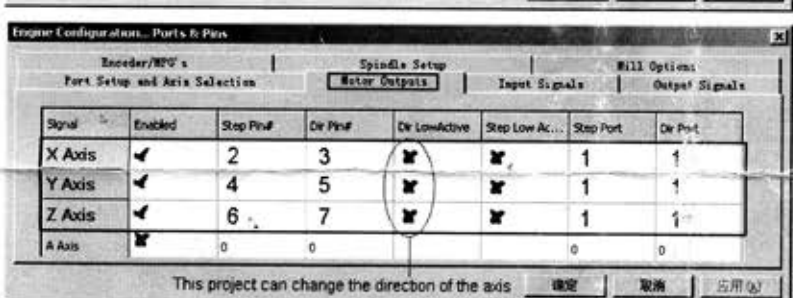
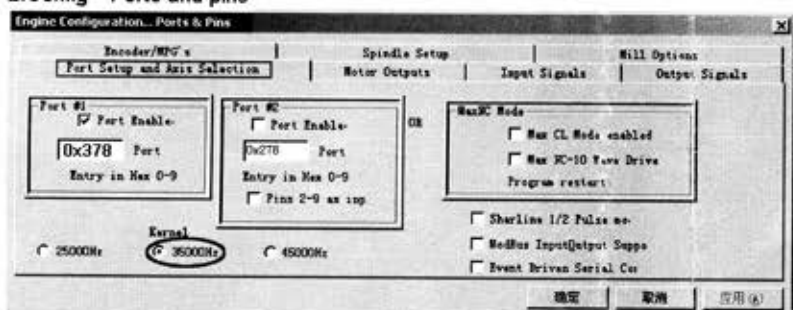
◆ Software operating environment: To ensure MACH3 working properly, when running Mach3, please do not connect the computer to the Internet, and do not running other software (including antivirus software) also, that's important!

Note: I suggest you read the installation parts of the Mach3 manual before installing the software, and you need to find the DriverTest.exe (in Mach3 installation directory) and run it, it can test your computer parallel port whether meet the requirements. when the installation is complete, do not run the software, restart the computer at once. Important! (related content see the mach3 manual).

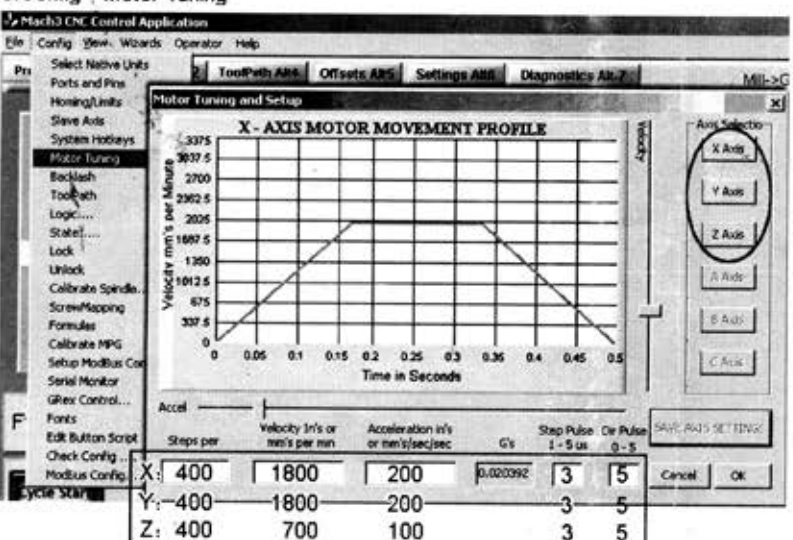
1. Config—Select Native Units



2. Config—Ports and pins



3. Config—Motor Tuning



Working test

1. Check the computer connecting well with engraving machine.

2. Run the Mach3 software. See the screen. If 'RESET' button is flashing, click it to stop blinking.

Note: If the "RESET" button can not stop blinking, check the emergency stop button on the control box is in pressed state:

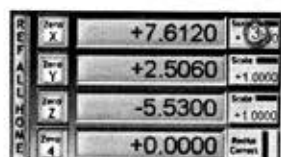
3. Open the control box power. Stepper motor will be self-locking:

4. Start the MACH3 manual control.

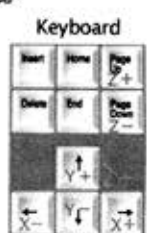
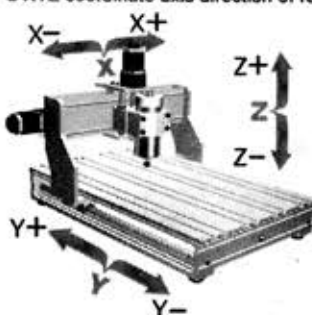
See below picture, click the Tab key on keyboard, the MACH3 manual control function will be activated. Now, you can try to press the X, Y or Z key, when you pressing, the axis of the engraving machine will have a corresponding action, and the MACH3 coordinate data will be changed. This shows that the MACH3 communicate properly with the engraving machine, you can start working.

When during manual control testing, if the MACH3 coordinate data did not changed, and the engraving machine has not any respond, it indicate that the MACH3 not installed successfully.

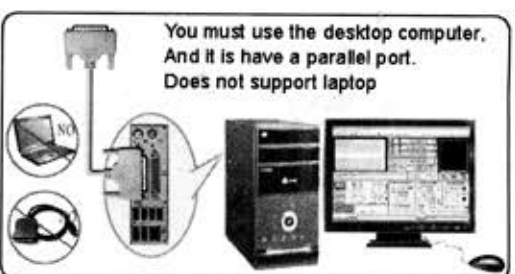
If you have other questions during testing, please contact us.



XYZ coordinate axis direction of reference



You can use to set up a 3-axis coordinate direction according to their needs. You can also refer to the above picture settings, in "Config—Ports and pins—Motor Outputs" settings, You can change the axis direction of change the "Dir LowActive" value.



You must carefully check each of the parameters. Any error will cause the machine did not run.