

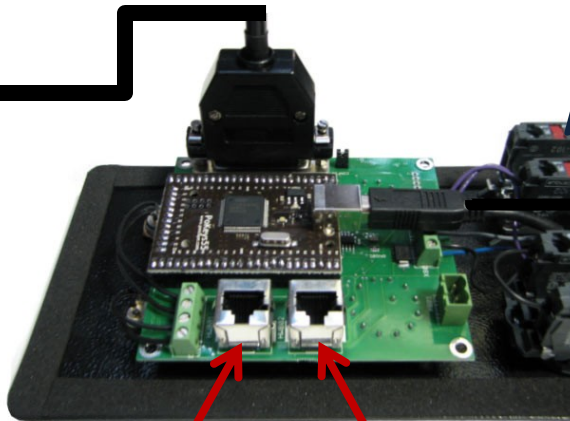
OPERATOR PANEL INSTALLATION DIAGRAM

X15-10-01



Pendant
X15-20-01

Operator Panel
X15-10-01

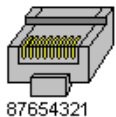


MPG 1

MPG 2

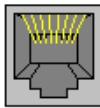
MPG Mod-Jacks	
Pin #	Function
1	A+
2	A-
3	B+
4	+5V DC
5	GND
6	B-
7	Unused
8	Unused

Where is pin #1?



87654321

12345678



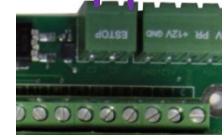
The MPG (Manual Pulse Generator) 1 is an extra MPG input for Mach3. MPG2 is the pendant MPG. MPG2 is used with a motion controller or you can use it as another MPG input if you are not using a pendant.

If your MPGs need more than 100mA, you must supply your own power.

Connect the unused terminal block to the external ESTOP connector on the breakout board.



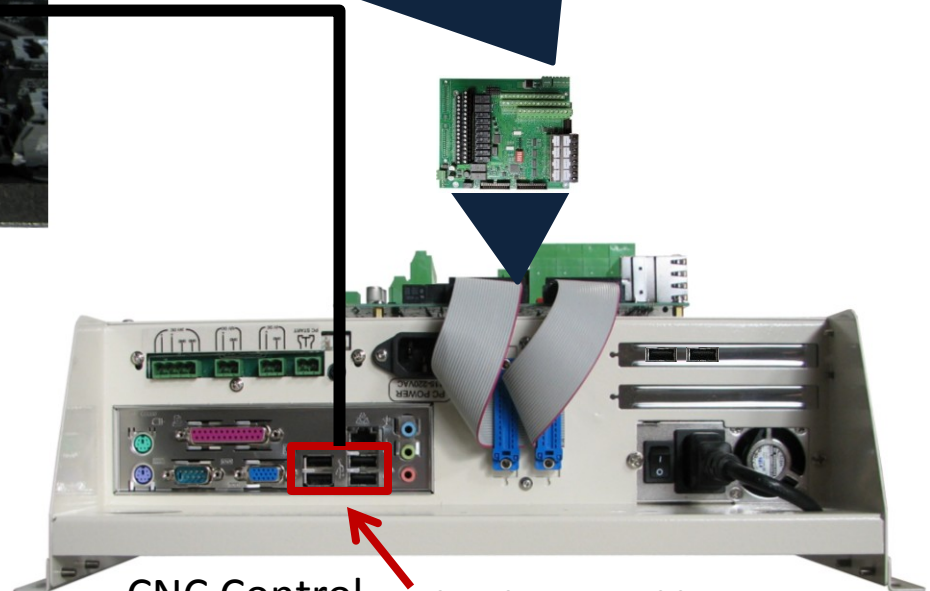
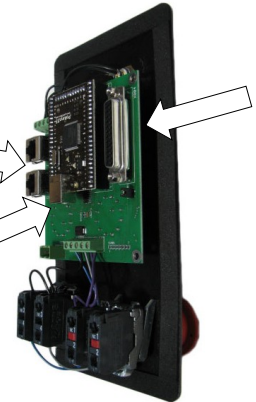
E-Stop Wiring



MPG Ports

USB Port

Pendant
Connector



CNC Control

Plug the USB cable into one of these ports.