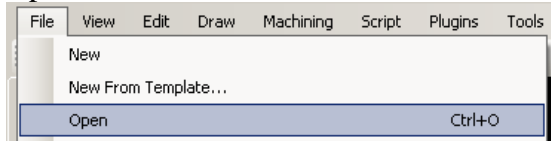
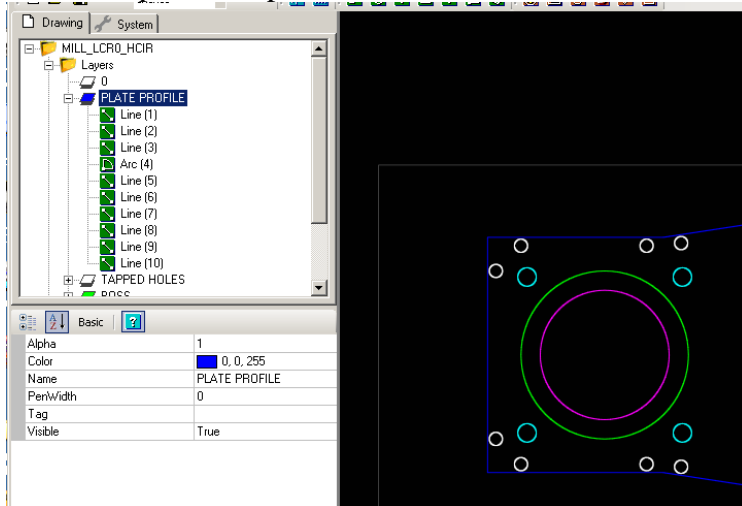


USING CAMBAM

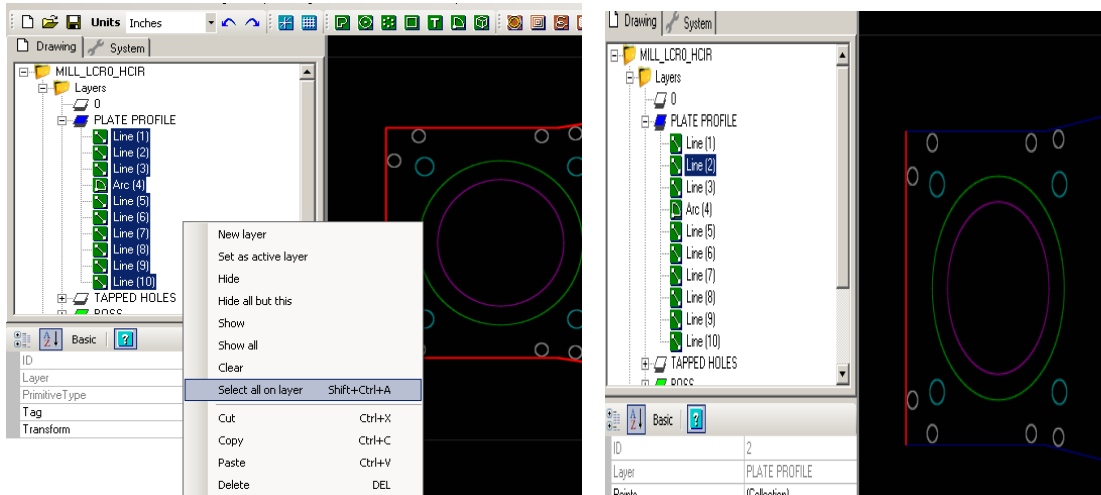
Open the dxf file.



Select the profile or parts to be machined

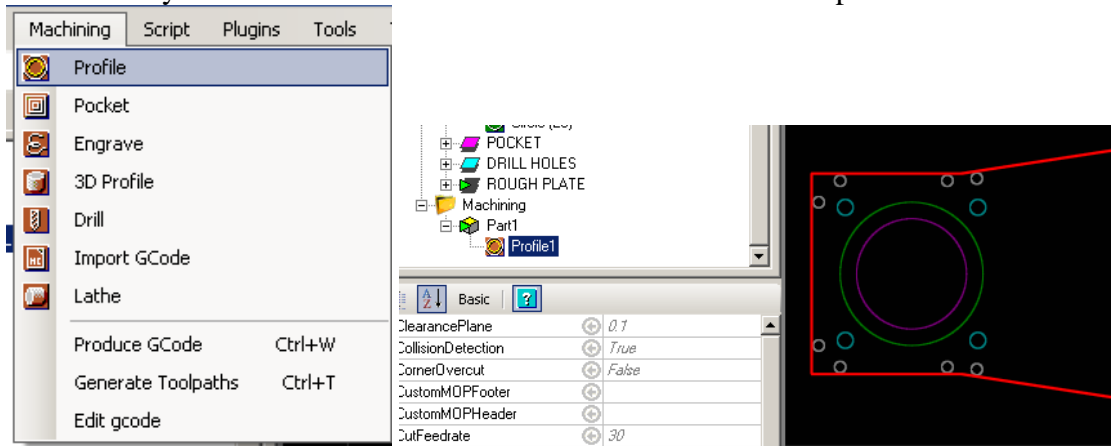


Hold the CTRL key and select each entity in the graphics window or the drawing listing. Clicking twice on the entity will deselect it. Right click in the graphics window will deselect everything. Select all on layer will select everything on the layer.

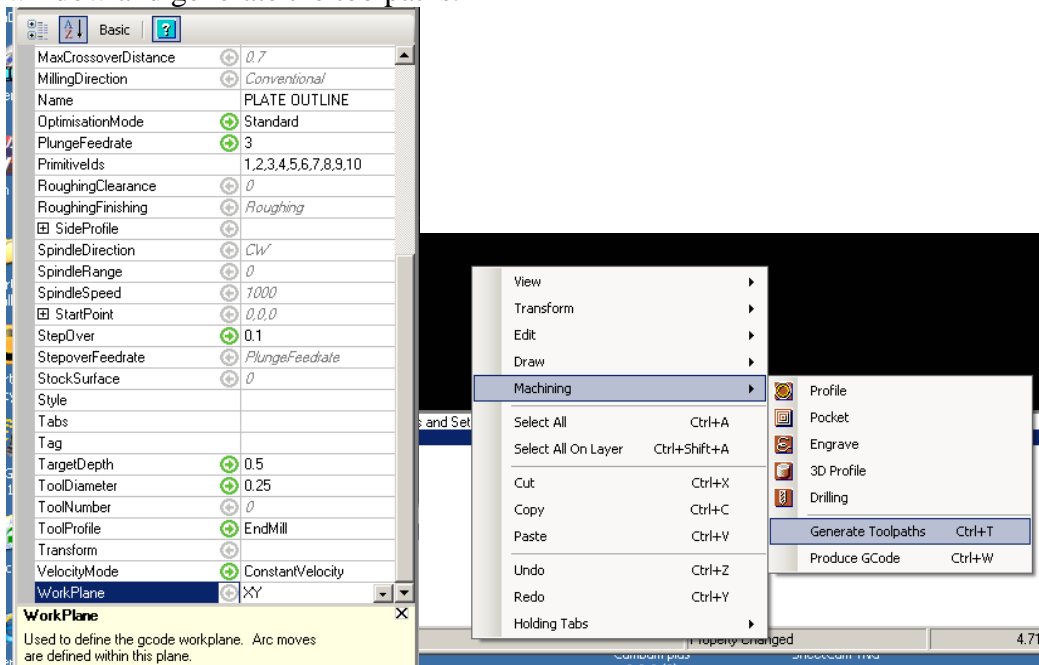


Select all will select everything and you can deselect by clicking on the entity while holding down the ALT key for those you don't want included in the machining task.

Select what you want to do to the selection. You can rename the profile .



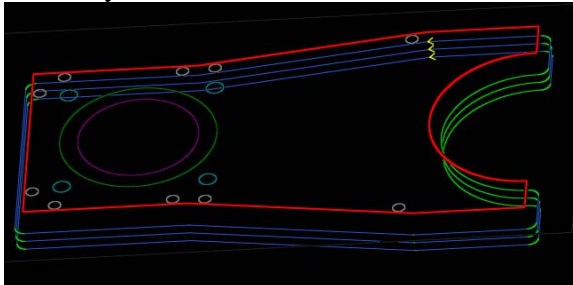
Define all the machining parameters for the operation. Then left click for the pop up window and generate the toolpaths.



Middle mouse button- moves the profile in the graphics window

Middle mouse button scrolling zooms in and out

ALT key + Left Mouse to rotate, view>reset to bring back to plan view



You can go back to the machining inputs and change anything you want but just redo the tool path generation. To generate the gcode.

