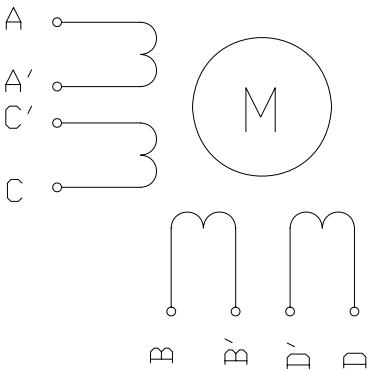


specifications:

PHASE	STEP ANGLE	RATED VOLTAGE	CURRENT /PHASE	RESISTANCE /PHASE	INDUCTANCE /PHASE	HOLDING TORQUE	ROTOR INERTIA	WEIGHT
	DEG/STEP	V	A	ohms	mH	Nm	gcm ²	Kg
unipolar	1.8	2.8	2.8	1.0	1.6	1.37	480	1.0
bipolar(s)	1.8	4.0	2.0	2.0	6.4	1.853	480	1.0
bipolar(p)	1.8	2.0	4.0	0.5	1.6	1.853	480	1.0

Wiring Diagram:

A:BLU/WHT
A:BLU
C:RED/WHT
C:RED
B:GRN/WHT
B:GRN
D:BLK/WHT
D:BLK

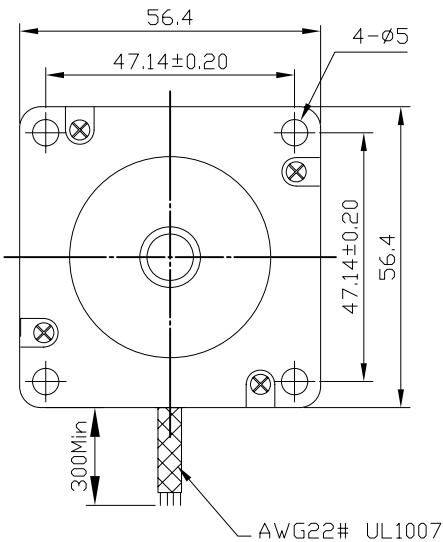
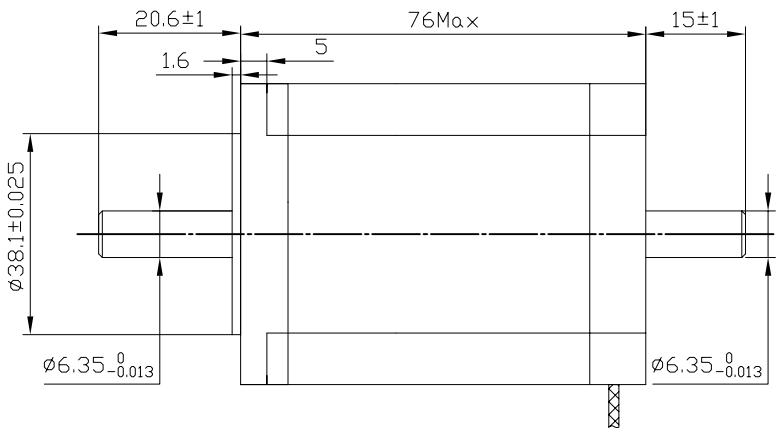


Rotation:

CW DIRECTION	STEP	A C'	C A'	B D'	D B'
	1	+		+	
	2		+	+	
	3		+		+
	4	+			+
	1	+		+	

CW direction,see from the shaft end

Dimension:



						DESIGN	DATE	P/N.
REV	ECN NO.	DESCRIPTION	DRN	APP'D	DATE			TITLE
UNLESS OTHERWISE SPECIFIED TOLERANCES: DECIMALS: ANGULAR: .x ±0.5 ±0°30' .xx ±0.25 .xxx ±0.1 UNIT: mm DO NOT SCALE DRAWING			MATERIAL			CHECK		USED ON
			THIRD ANGLE PROJECTION			APPD		FL57STH76-2808B
						SCALE		DWG NO. SS REV
						SHEET	OF	MCP Ltd