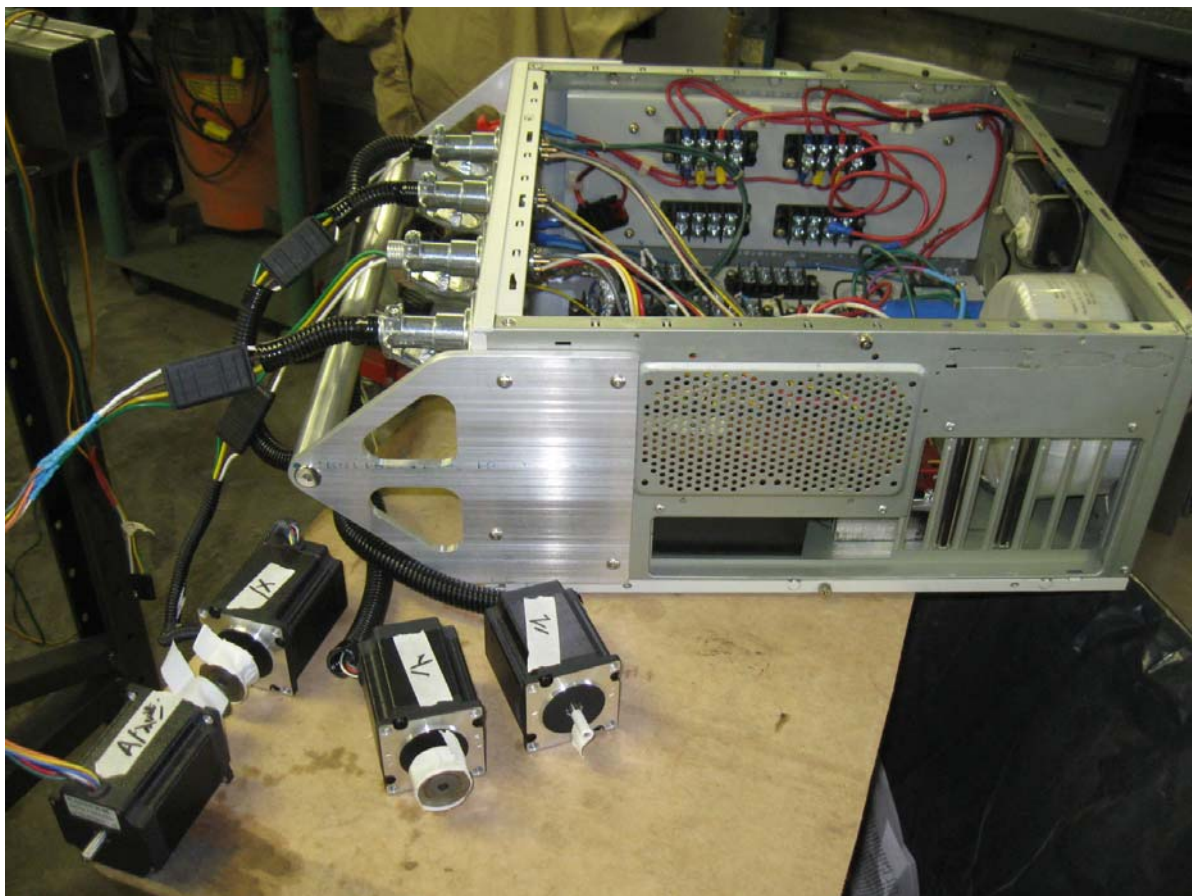
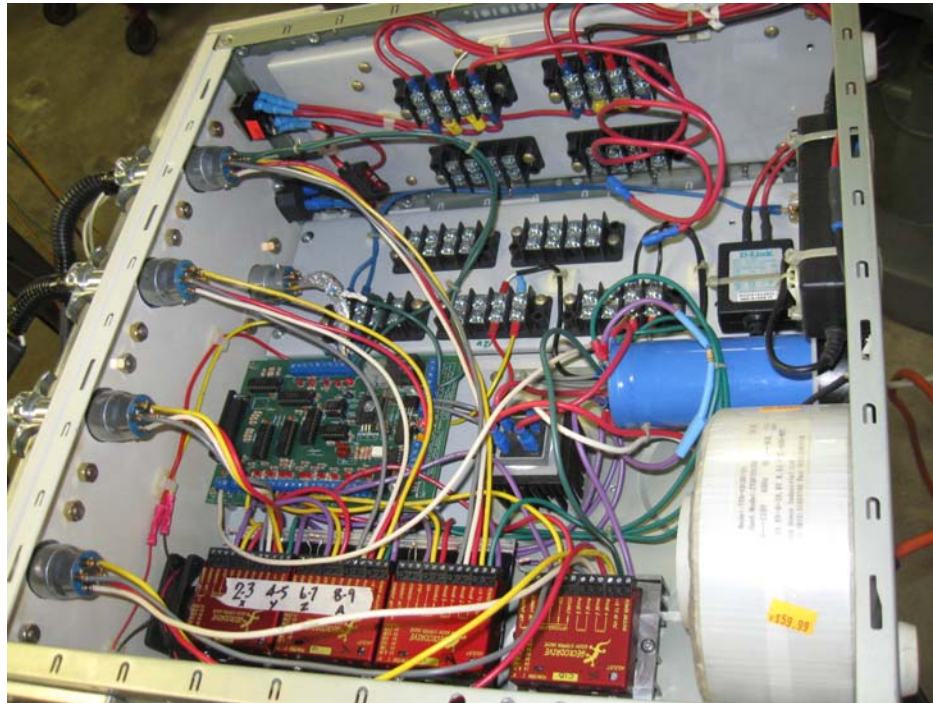
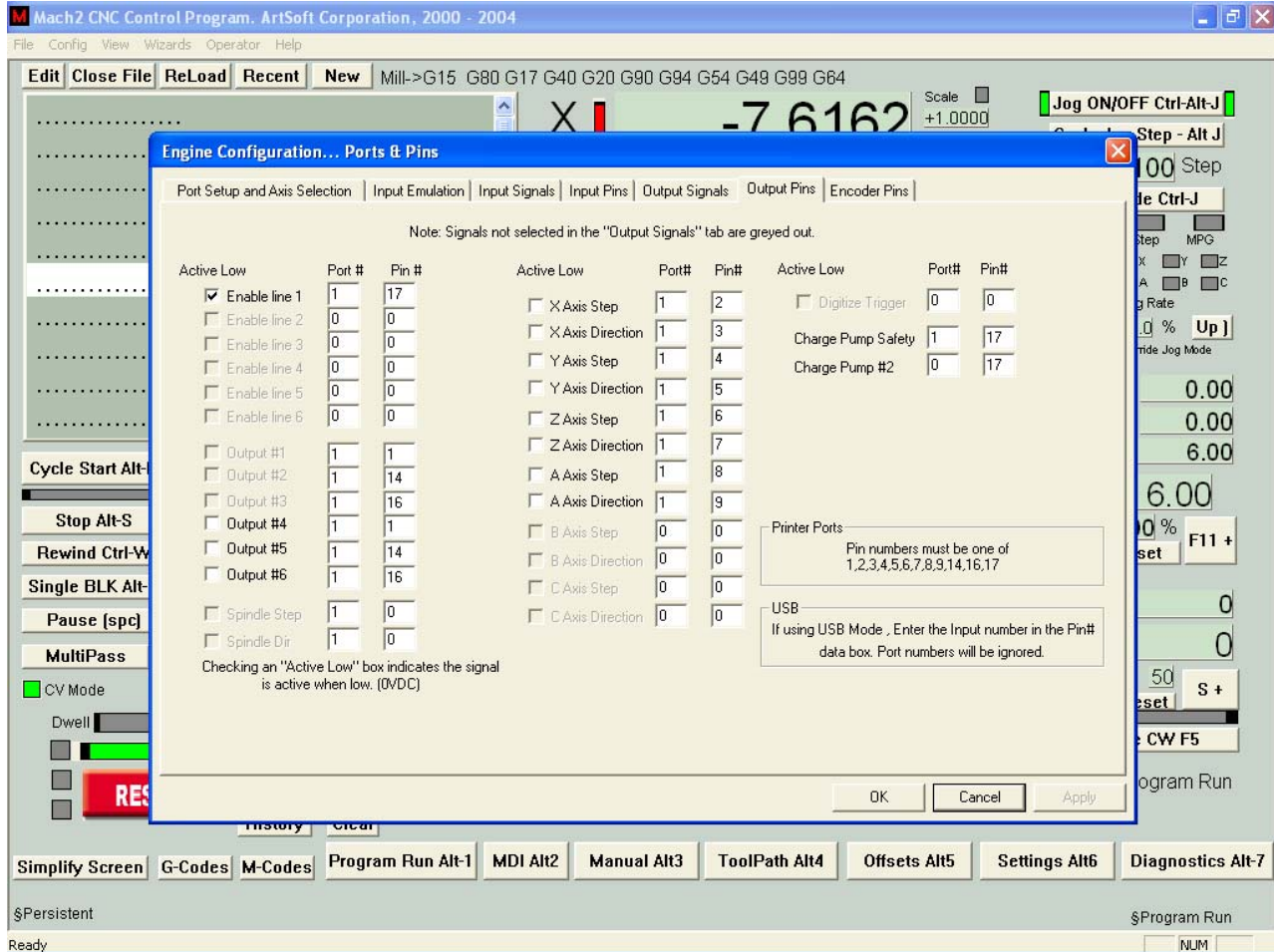


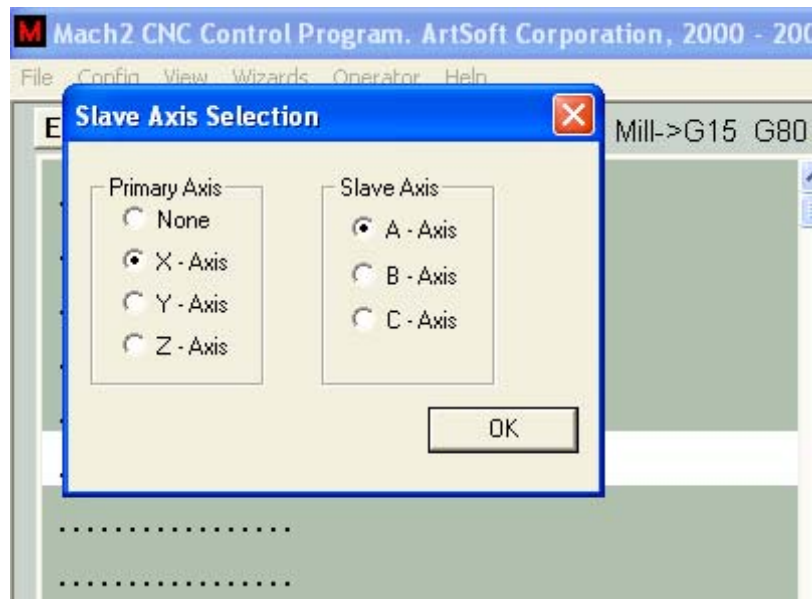
Controller setup for jog bench testing.



My set up in MACH2, all motors run as I need them to on the plasma mockup....



Set up to simulate the plasma table, A axis slaved to the X axis. Jog the x axis and all works as it is supposed to.



I have tried to duplicate the MACH2 configuration in MACH3. But I am not getting the same results. Here when I jog the X axis I am getting the z axis motor and a axis motors running. When I jog the z axis, the x motor runs. Y axis is OK. Any ideas?

