

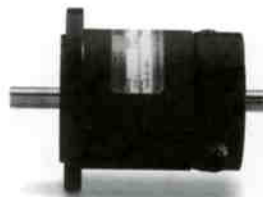
## DC Motor Only

MOTOR RATINGS (up to 155°C Armature Temp.)	0240-03-017	0240-06-018	0242-02-013	0243-02-014
Continuous Stall Torque (oz-in)	32	32	50	54
Peak Torque (before demagnetization) (oz-in)	240	240	350	420
Maximum Terminal Voltage (V)	60	60	60	60
Maximum Operating Speed (rpm)	6000	4200	6000	5000
<b>MECHANICAL DATA</b>				
Armature Moment of Inertia (oz-in-sec <sup>2</sup> )	0.0038	0.0038	.0062	.0074
Mechanical Time Constant (msec)	9.5	7.8	9.1	8.86
Damping Constant (oz-in/krpm)	0.10	0.10	0.20	0.20
Thermal Resistance (°C/watt)	5.0	5.0	4.2	4.2
Maximum Armature Temperature (°C)	155	155	155	155
Maximum Friction Torque (lb-in)	0.18	0.18	0.18	0.18
Maximum Shaft Radial Load (lbs) (1" from front bearing continuous)	10*	10*	10*	10*
Weight (lbs)	3	3	3	3
<b>WINDING DATA</b>				
K <sub>T</sub> Torque Constant ± 10% (oz-in/amp)	9.6	19.2	11.8	13.7
K <sub>E</sub> Voltage Constant ± 10% (V/krpm)	7.1	14.2	8.6	10.2
Winding Resistance ± 15% @ 25°C (Ω)	1.23	4.98	1.04	1.6
Electrical Time Constant (msec)	1.84	2.2	2.3	2.6
Maximum Pulse Current (A)	24	12	29	34
Armature Inductance (mH)	3.0	12	3.3	4.5

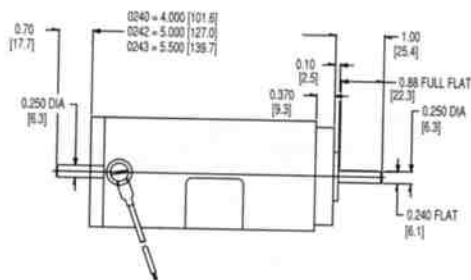
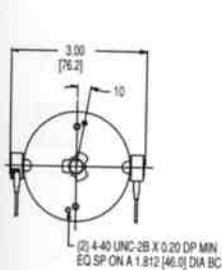
\*(1/2" from front bearing continuous)



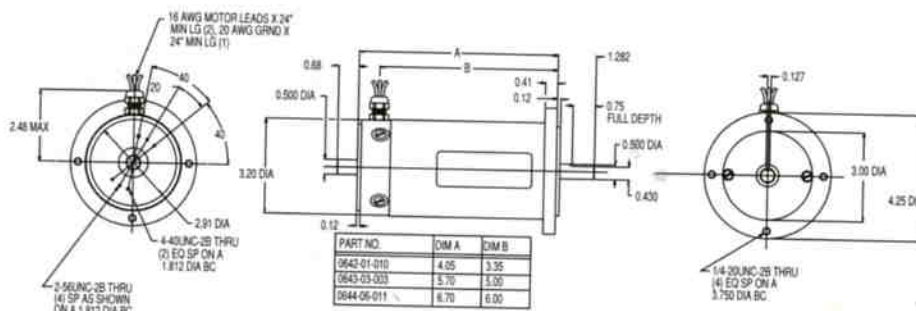
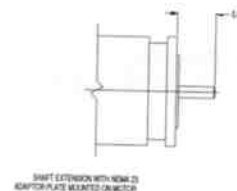
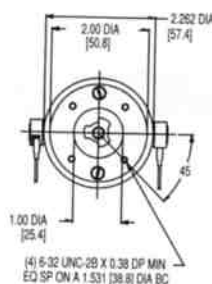
Typical 0240/0242/0243



Typical 0642/0643/0644



0240/0242/0243



For Optical Encoder Options and NEMA 23 Adapter Kits, see Page 193  
 LEAD WIRE COLOR CODE: Red = Motor + CW, Black = Motor