

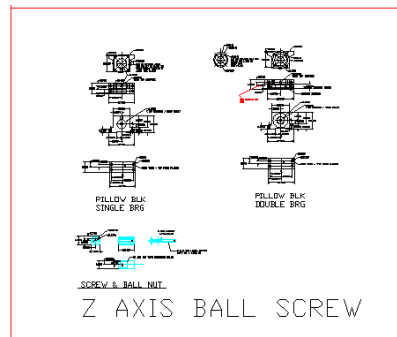
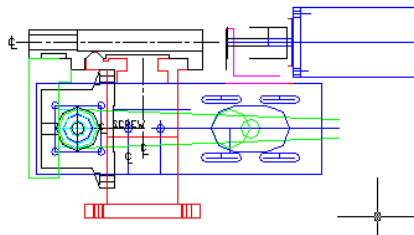
## MINI LATHE 7X14 – CONVERSION TO CNC

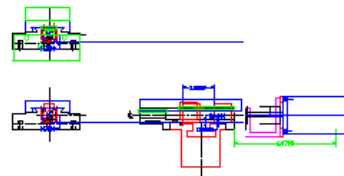
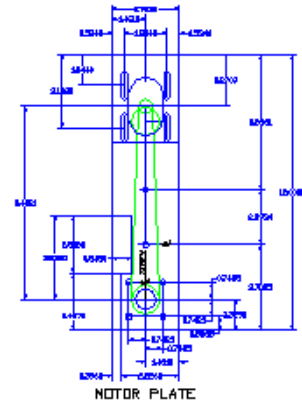
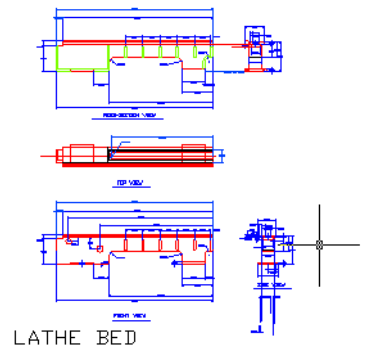
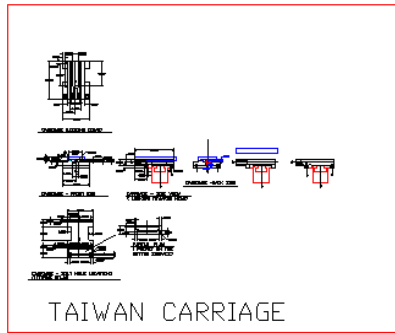
This write-up is about converting a mini lathe to CNC. All the mini lathes are made in the same factory except they have different features and parts are interchangeable. Common brand names are Grizzly, Central Machinery, MicroLux, Speedway as shown in the picture below. They are used by many hobbyists and provide for rather easy cnc conversion.



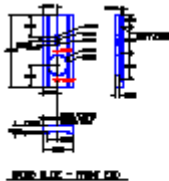
The write up should be interesting to many and will provide a lot of info on the conversion.

We are in the design stage at the moment creating dimensional 2D CAD drawings of the lathe and also creating 3D models. Takes time but worth it in the long run. I guess everyone would do a conversion differently, but the owner has some definite ideas on what will be done. So stay tuned, don't know how long this will take, but in the end there will be some nice features.





## TAIWAN SCREW STUDY



## X AXIS BALL SCREW

